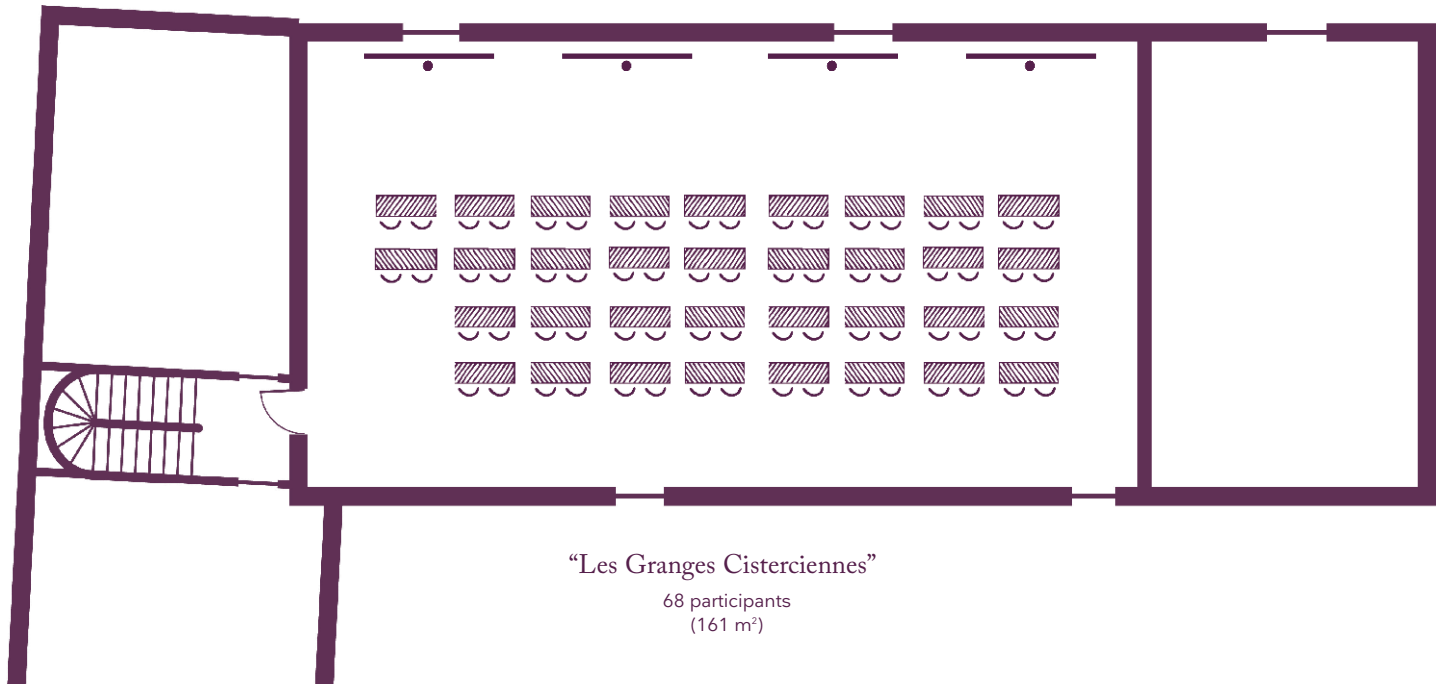


Your meeting rooms

Room layouts adapted to your specific meeting requirements

West wing - Level R + 1



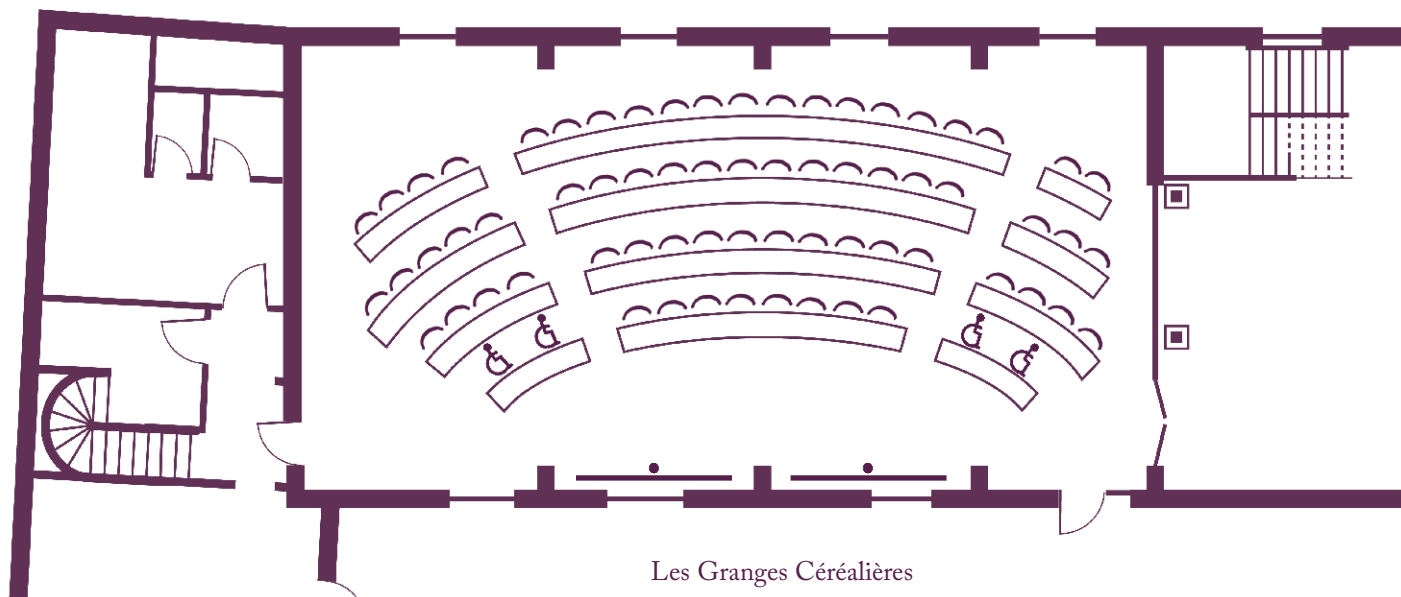
The home of seminars
Châteauform'

Châteauform' Palais abbatial de Royaumont

Your meeting rooms

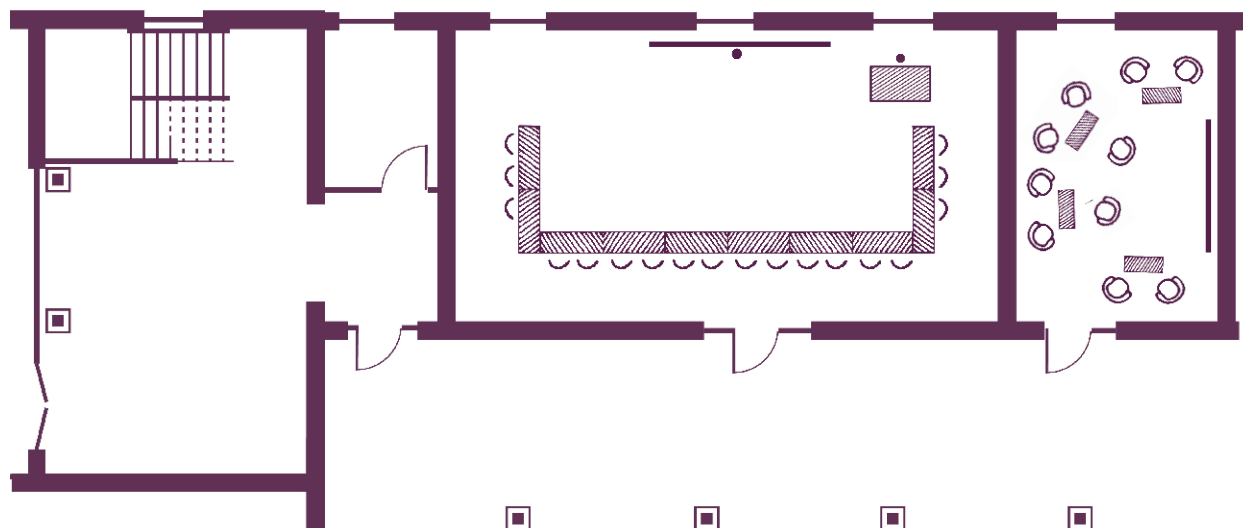
Room layouts adapted to your specific meeting requirements

West wing - Ground floor



Les Granges Céréalières

71 participants
(161 m²)



Les Celliers

18 participants
(67 m²)

Le Colombier

10 participants
(25 m²)



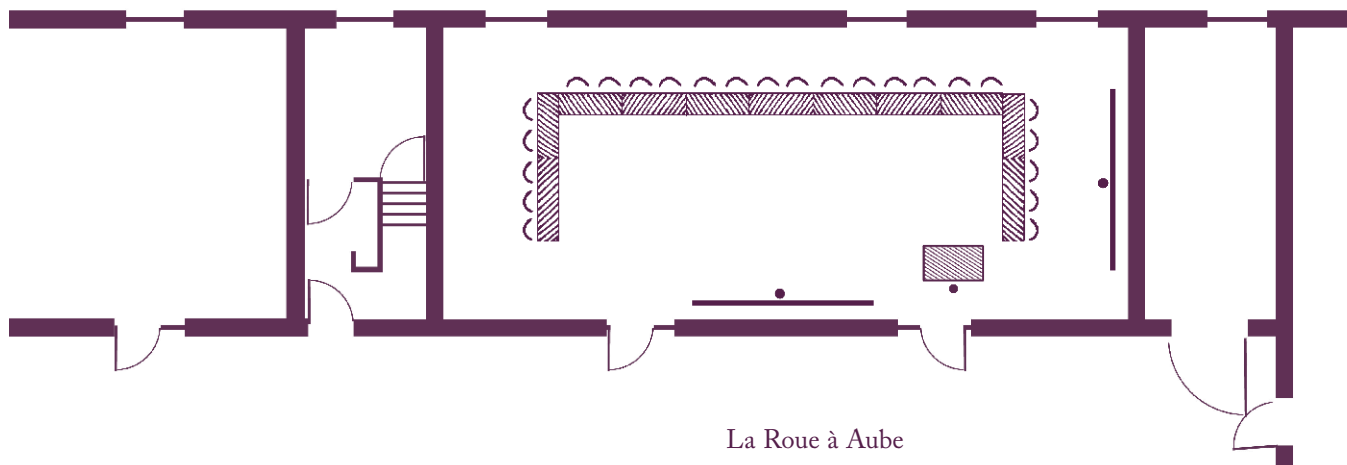
The home of seminars
Châteauform'

Châteauform' Palais abbatial de Royaumont

Your meeting rooms

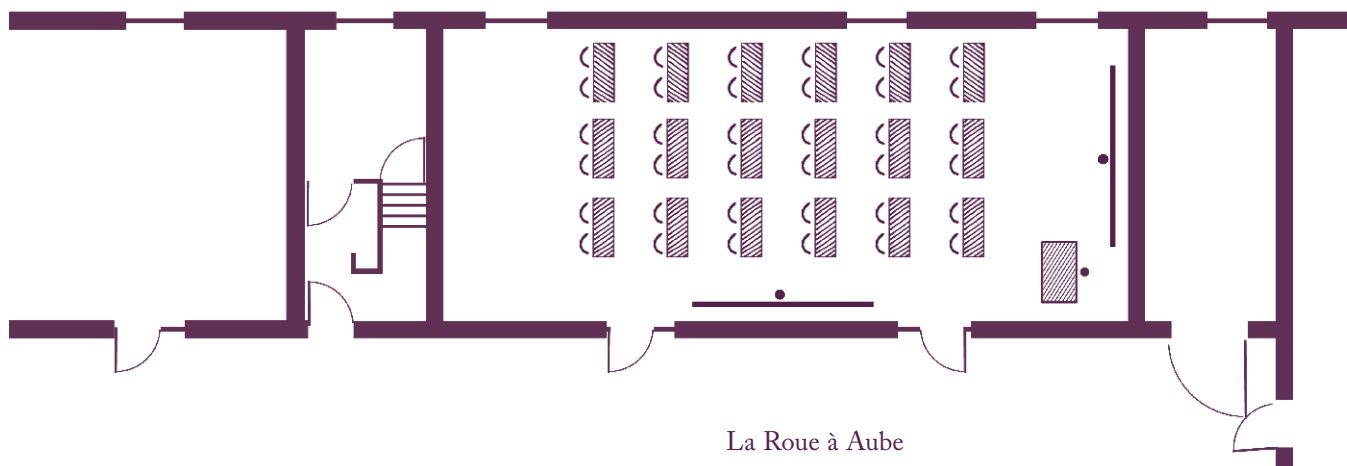
Room layouts adapted to your specific meeting requirements

West wing - Ground floor



La Roue à Aube

24 participants
(87 m²)



La Roue à Aube

36 participants
(87 m²)



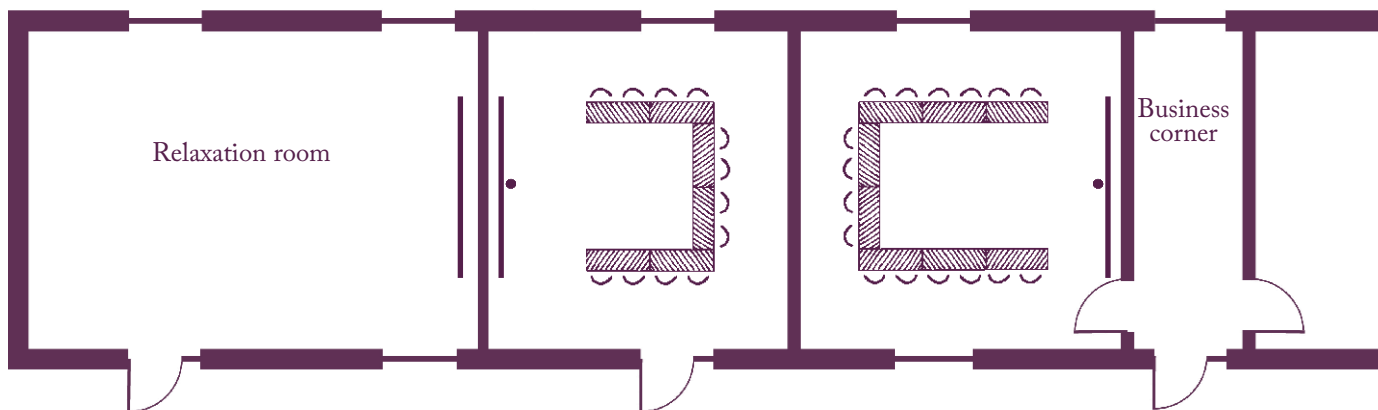
The home of seminars
Châteauform'

Châteauform' Palais abbatial de Royaumont

Your meeting rooms

Room layouts adapted to your specific meeting requirements

South wing - Ground floor

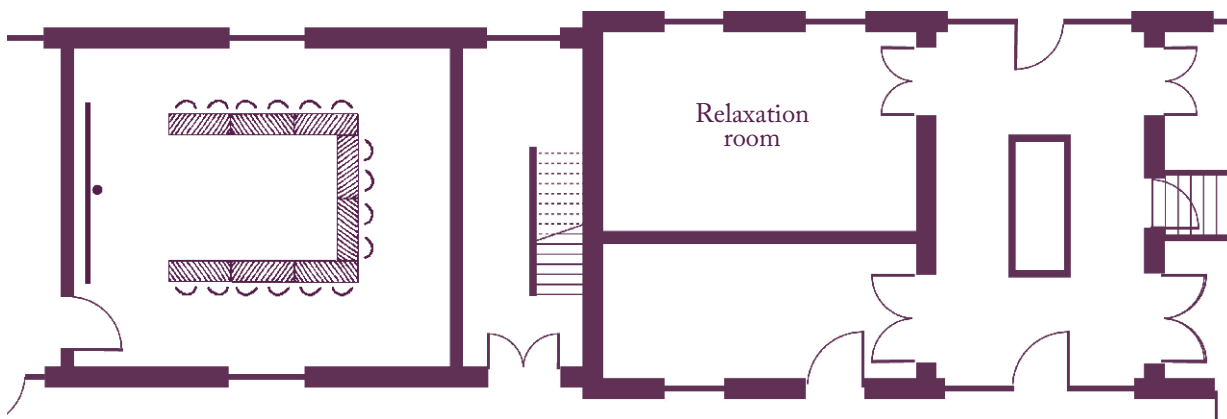


Le Moulin à Foulons

12 participants
(32 m²)

Les Granges Pastorales

16 participants
(34 m²)



Le Grenier à Foin

16 participants
(40 m²)



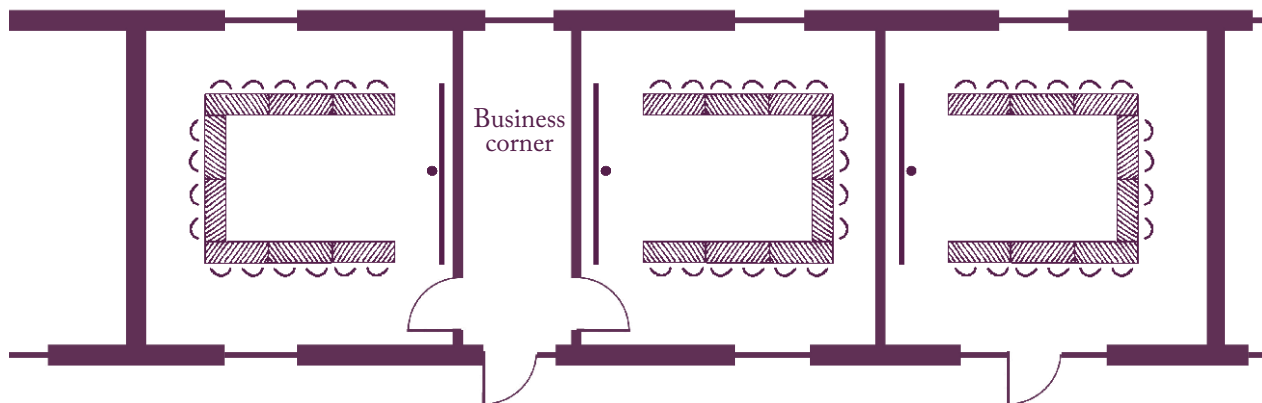
The home of seminars
Châteauform'

Châteauform' Palais abbatial de Royaumont

Your meeting rooms

Room layouts adapted to your specific meeting requirements

South wing - Ground floor



Le Moulin à Grain

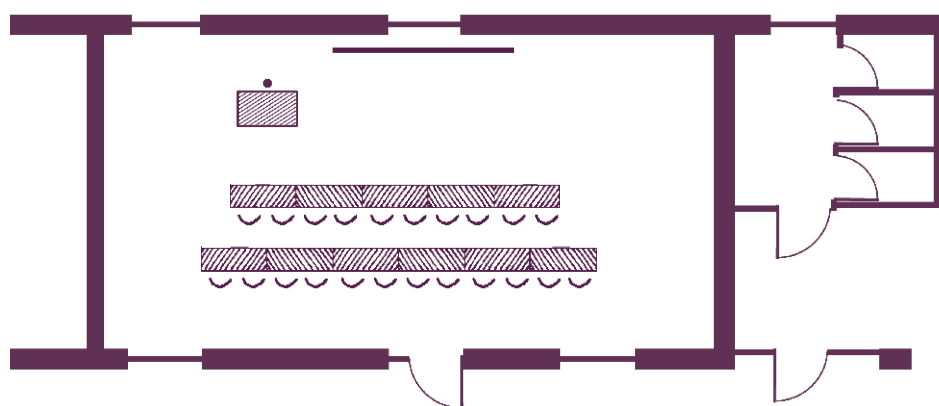
16 participants
(33 m²)

L'Atelier

16 participants
(31 m²)

La Ferronnerie

16 participants
(35 m²)



Le Domaine Rural

22 participants
(68 m²)



The home of seminars
Châteauform'

Châteauform' Palais abbatial de Royaumont