

Your meeting rooms

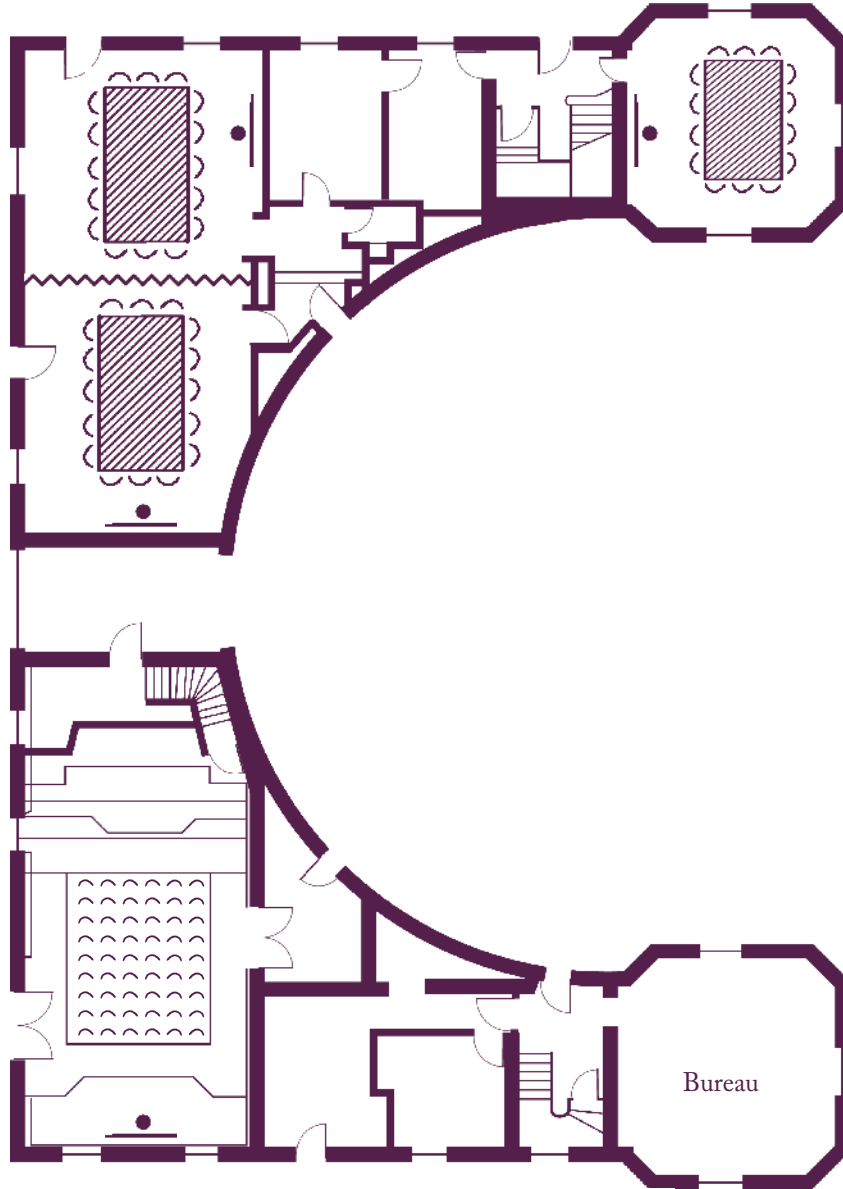
Room layouts adapted to your specific meeting requirements

The Cenacle

Montesquieu
16 participants
(41 m²; 6 m x 7 m)

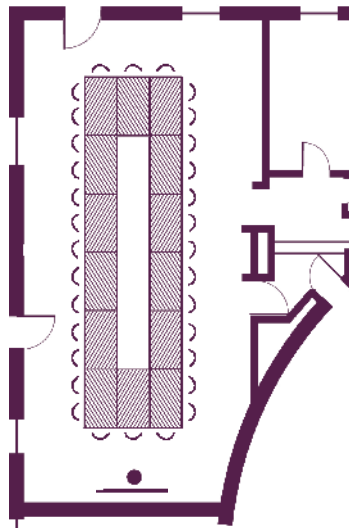
Montesquieu
16 participants
(41 m²; 6 m x 7 m)

Thomas Jefferson
54 participants
(71 m²; 6 m x 12 m)



D'Alembert
14 participants
(32 m²; 5 m x 6 m)

Montesquieu
32 participants
(81 m²; 6 m x 13 m)



The home of seminars
Châteauform'

Domaine de Béhoust

Your meeting rooms

Room layouts adapted to your specific meeting requirements

The Cenacle

Montesquieu
14 participants
(41 m²; 6 m x 7 m)

Montesquieu
14 participants
(41 m²; 6 m x 7 m)

Montesquieu
16 participants
(41 m²; 6 m x 7 m)

Montesquieu
16 participants
(41 m²; 6 m x 7 m)

D'Alembert
12 participants
(32 m²; 5 m x 6 m)

Montesquieu
30 participants
(81 m²; 6 m x 13 m)

D'Alembert
12 participants
(32 m²; 5 m x 6 m)

Montesquieu
40 participants
(81 m²; 6 m x 13 m)



The home of seminars
Châteauform'

Domaine de Béhoust

Your meeting rooms

Room layouts adapted to your specific meeting requirements

The Cenacle

Montesquieu
30 participants
(41 m²; 6 m x 7 m)

Montesquieu
30 participants
(41 m²; 6 m x 7 m)

Montesquieu
18 participants
(41 m²; 6 m x 7 m)

Montesquieu
18 participants
(41 m²; 6 m x 7 m)

D'Alembert
14 participants
(32 m²; 5 m x 6 m)

Montesquieu
65 participants
(81 m²; 6 m x 13 m)

D'Alembert
12 participants
(32 m²; 5 m x 6 m)

Montesquieu
42 participants
(81 m²; 6 m x 13 m)



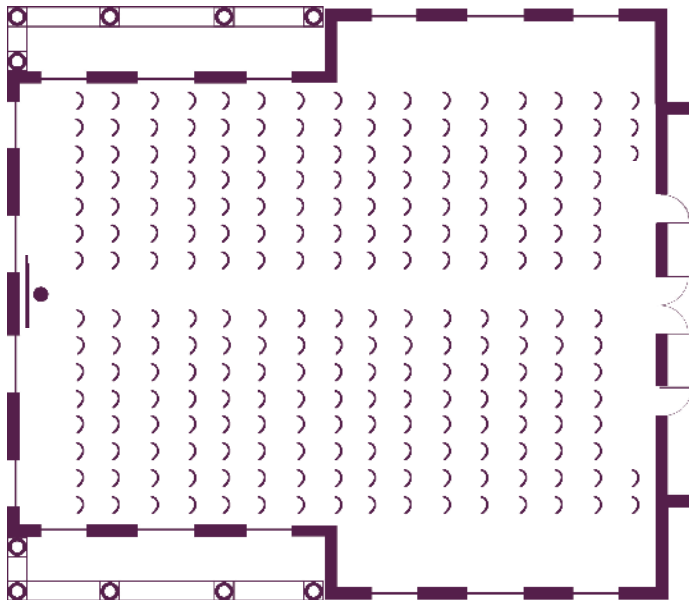
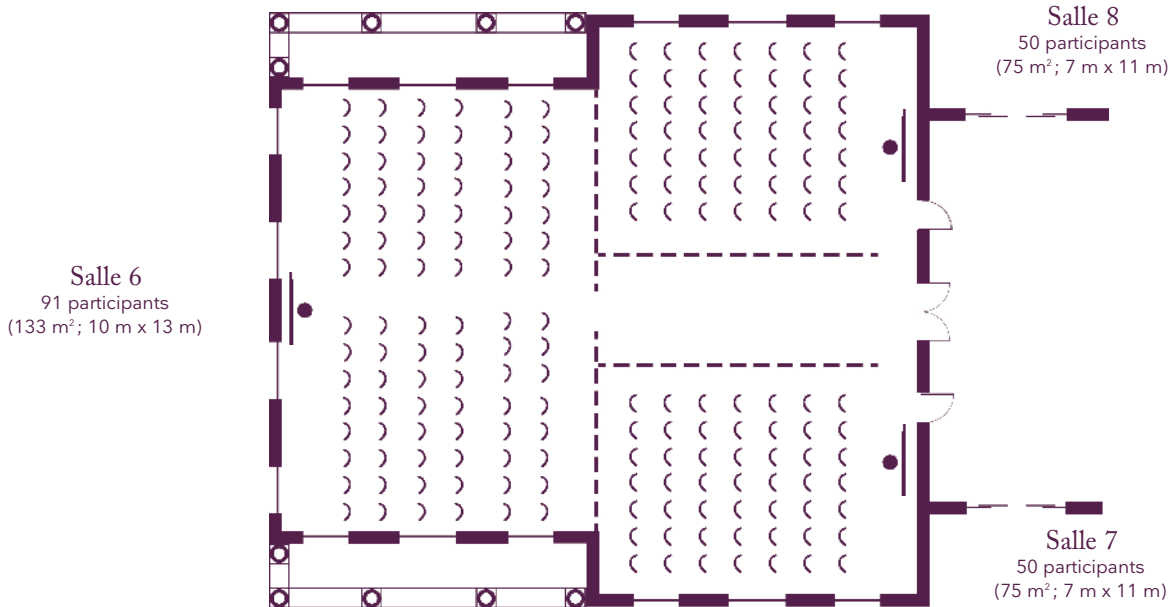
The home of seminars
Châteauform'

Domaine de Béhoust

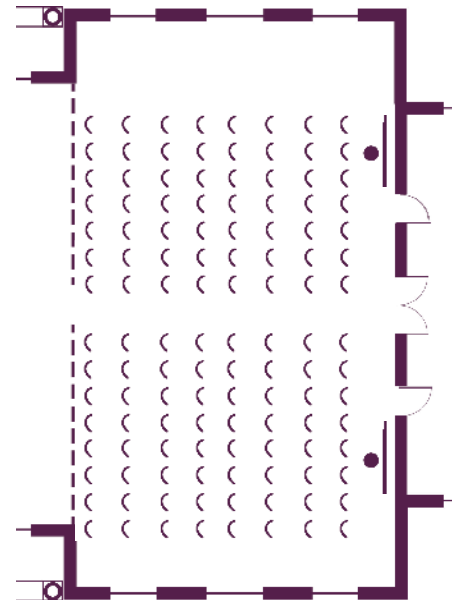
Your meeting rooms

Room layouts adapted to your specific meeting requirements

The Academies - Great room



Salle 6+7+8
230 participants
(356 m²; 18 m x 20 m)



Salle 7+8
120 participants
(180 m²; 10 m x 18 m)

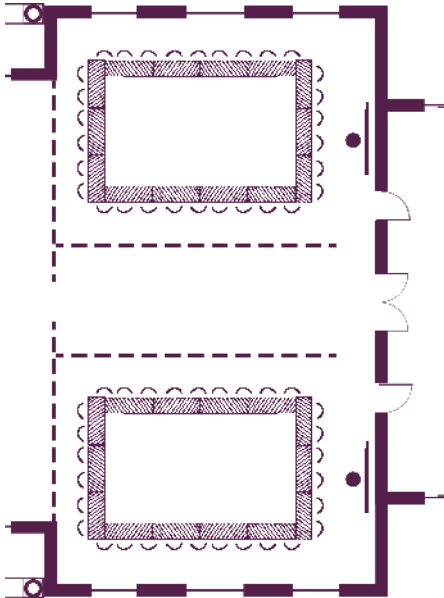


Your meeting rooms

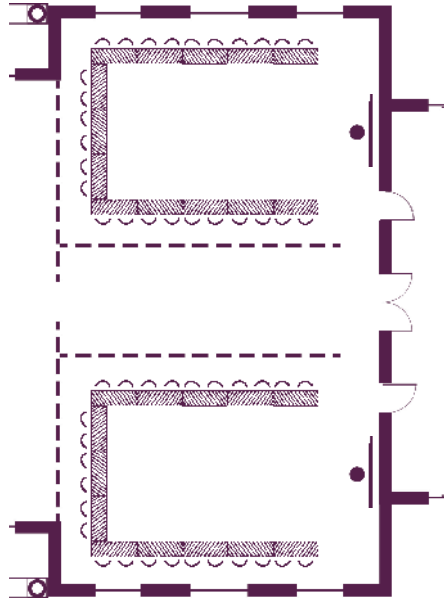
Room layouts adapted to your specific meeting requirements

The Academies - Great room

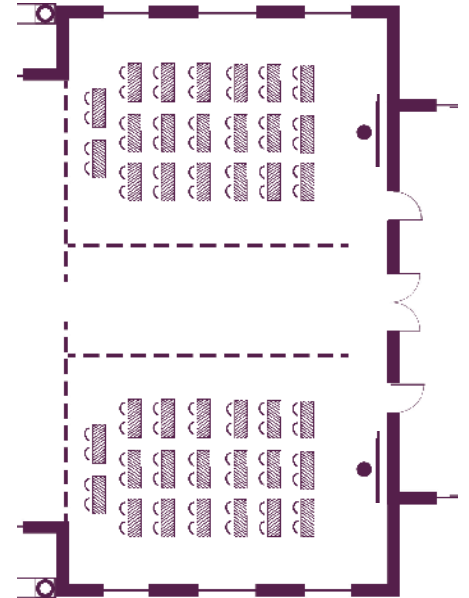
Salle 8
30 participants
(75 m²; 7 m x 10 m)



Salle 8
26 participants
(75 m²; 7 m x 10 m)



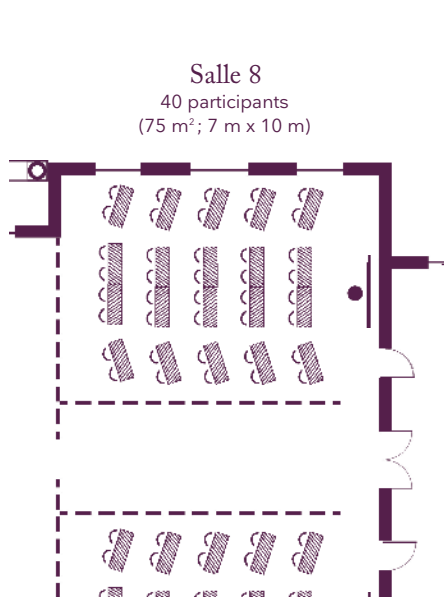
Salle 8
40 participants
(75 m²; 7 m x 10 m)



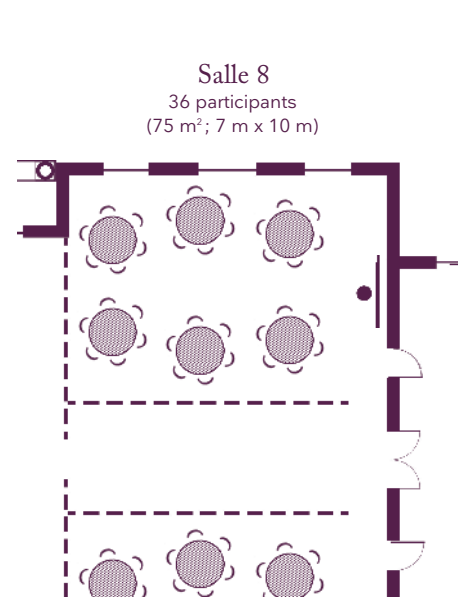
Salle 7
30 participants
(75 m²; 7 m x 10 m)



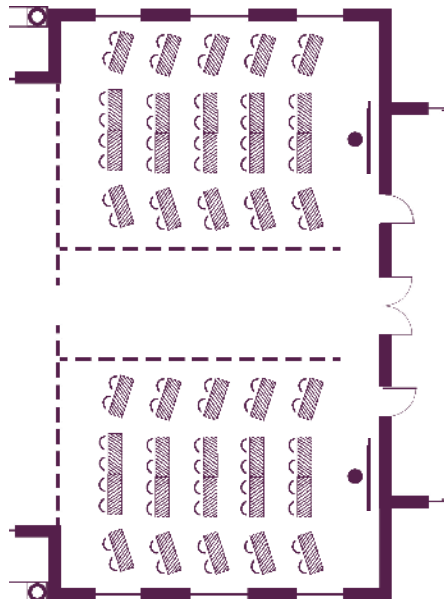
Salle 7
26 participants
(75 m²; 7 m x 10 m)



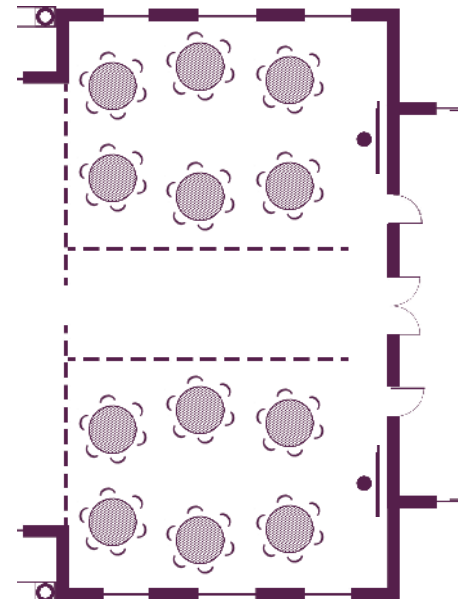
Salle 7
40 participants
(75 m²; 7 m x 10 m)



Salle 8
40 participants
(75 m²; 7 m x 10 m)



Salle 8
36 participants
(75 m²; 7 m x 10 m)



Salle 7
40 participants
(75 m²; 7 m x 10 m)



Salle 7
36 participants
(75 m²; 7 m x 10 m)



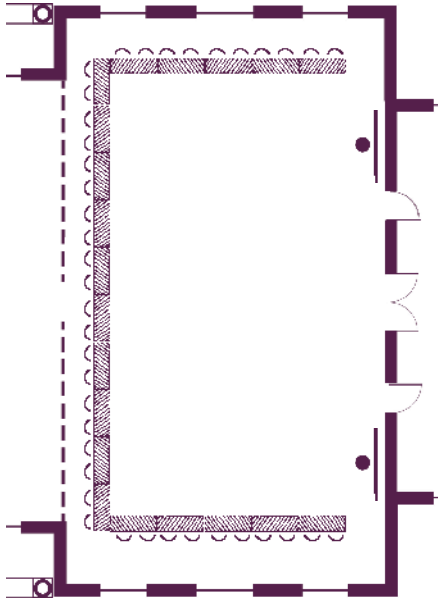
The home of seminars
Châteauform'

Domaine de Béhoust

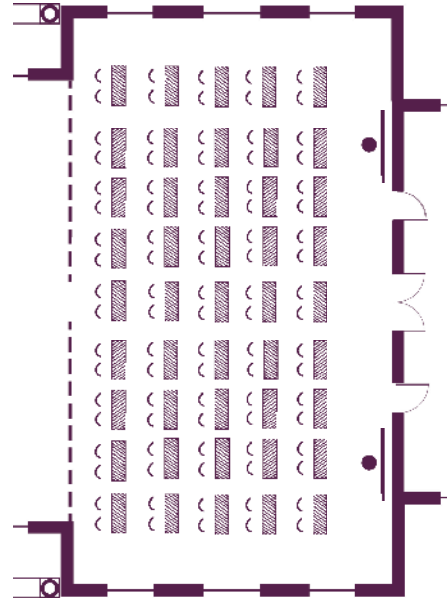
Your meeting rooms

Room layouts adapted to your specific meeting requirements

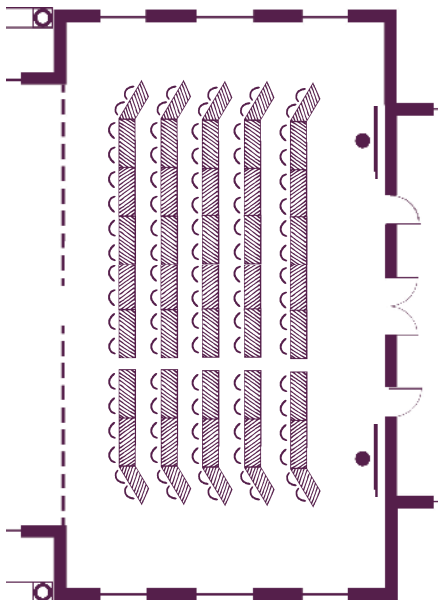
The Academies - Great room



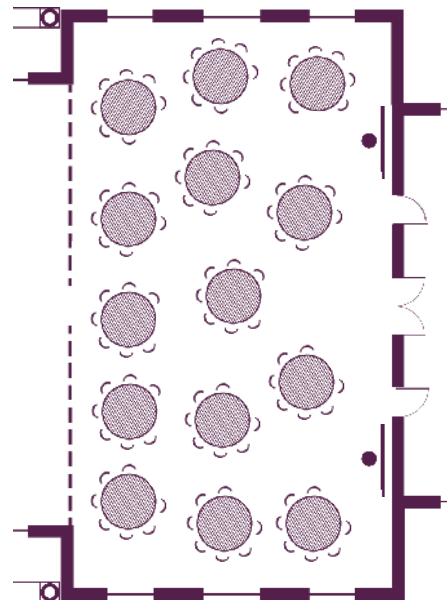
Salle 7+8
40 participants
(180 m²; 10 m x 18 m)



Salle 7+8
90 participants
(180 m²; 10 m x 18 m)



Salle 7+8
90 participants
(180 m²; 10 m x 18 m)



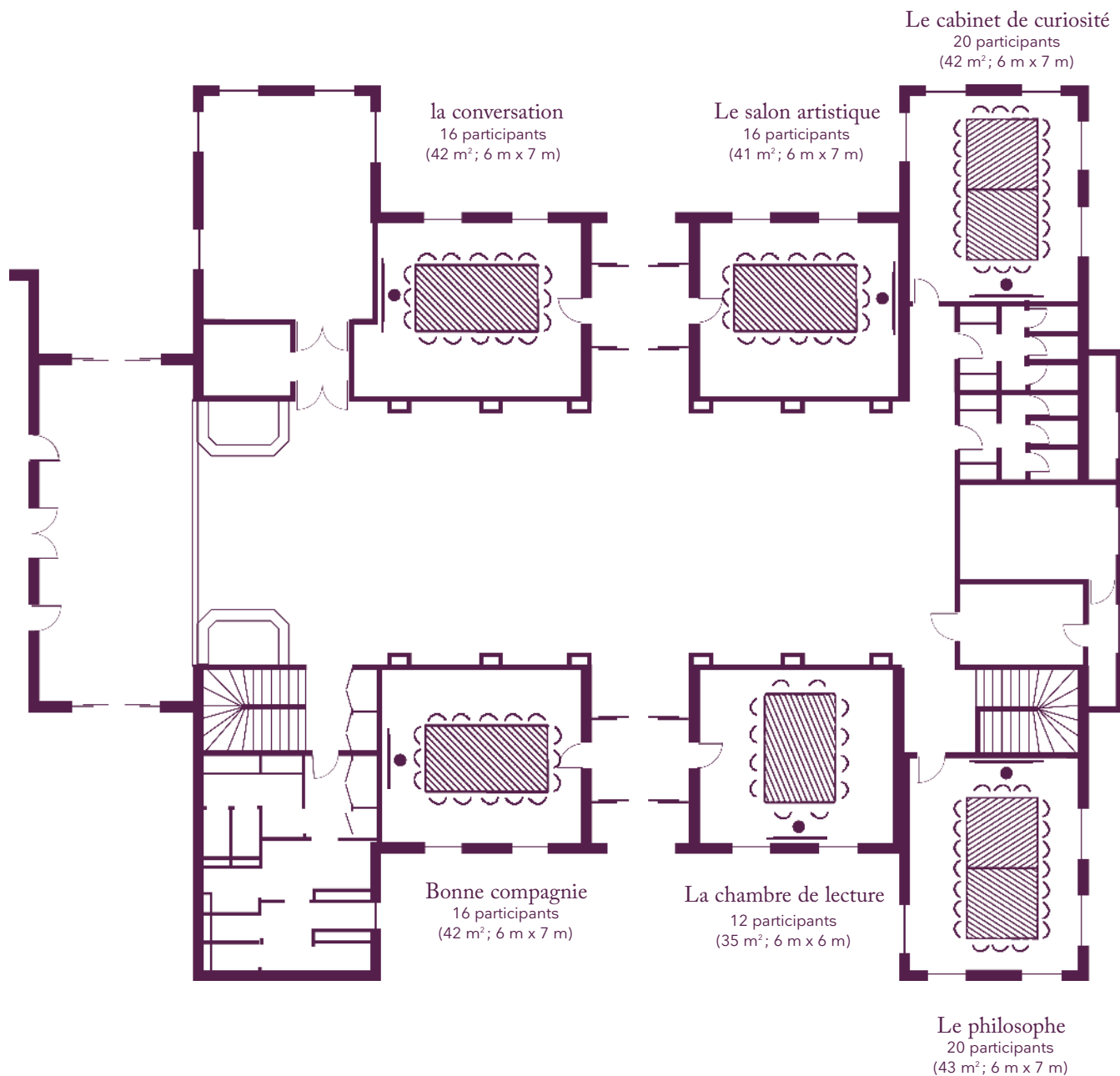
Salle 7+8
100 participants
(180 m²; 10 m x 18 m)



Your meeting rooms

Room layouts adapted to your specific meeting requirements

The Academies - Ground floor



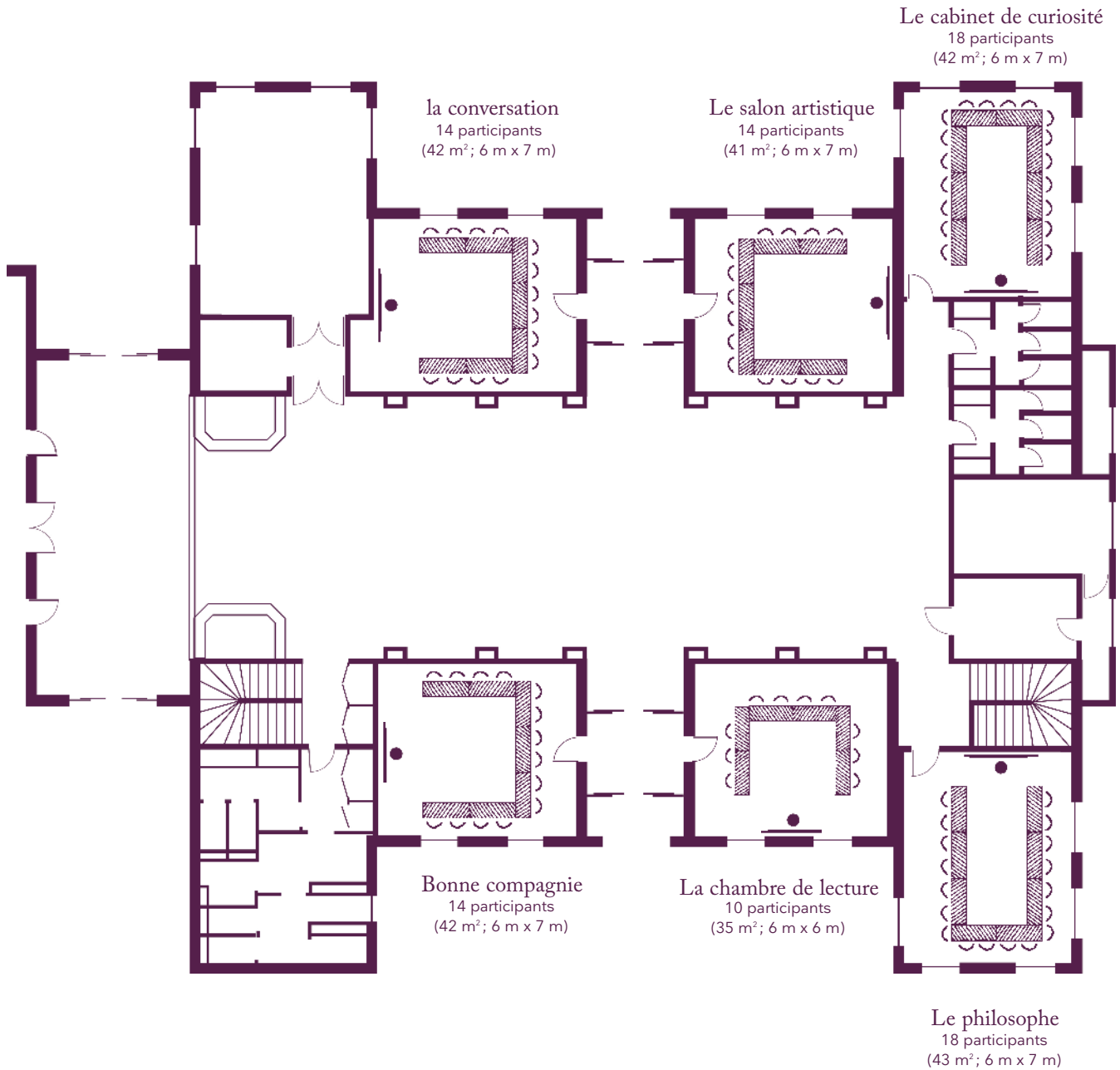
The home of seminars
Châteauform'

Domaine de Béhoust

Your meeting rooms

Room layouts adapted to your specific meeting requirements

The Academies - Ground floor



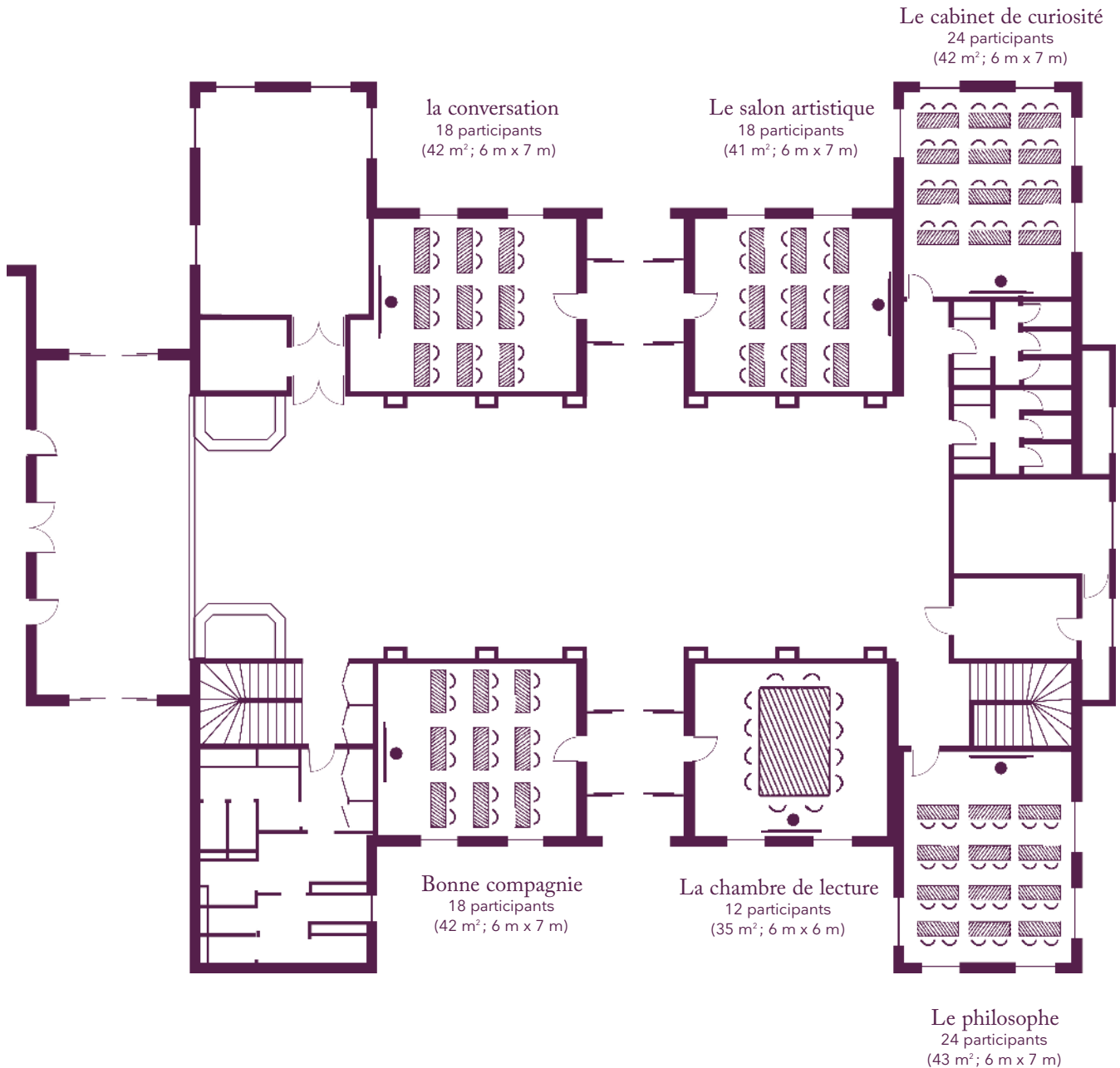
The home of seminars
Châteauform'

Domaine de Béhoust

Your meeting rooms

Room layouts adapted to your specific meeting requirements

The Academies - Ground floor



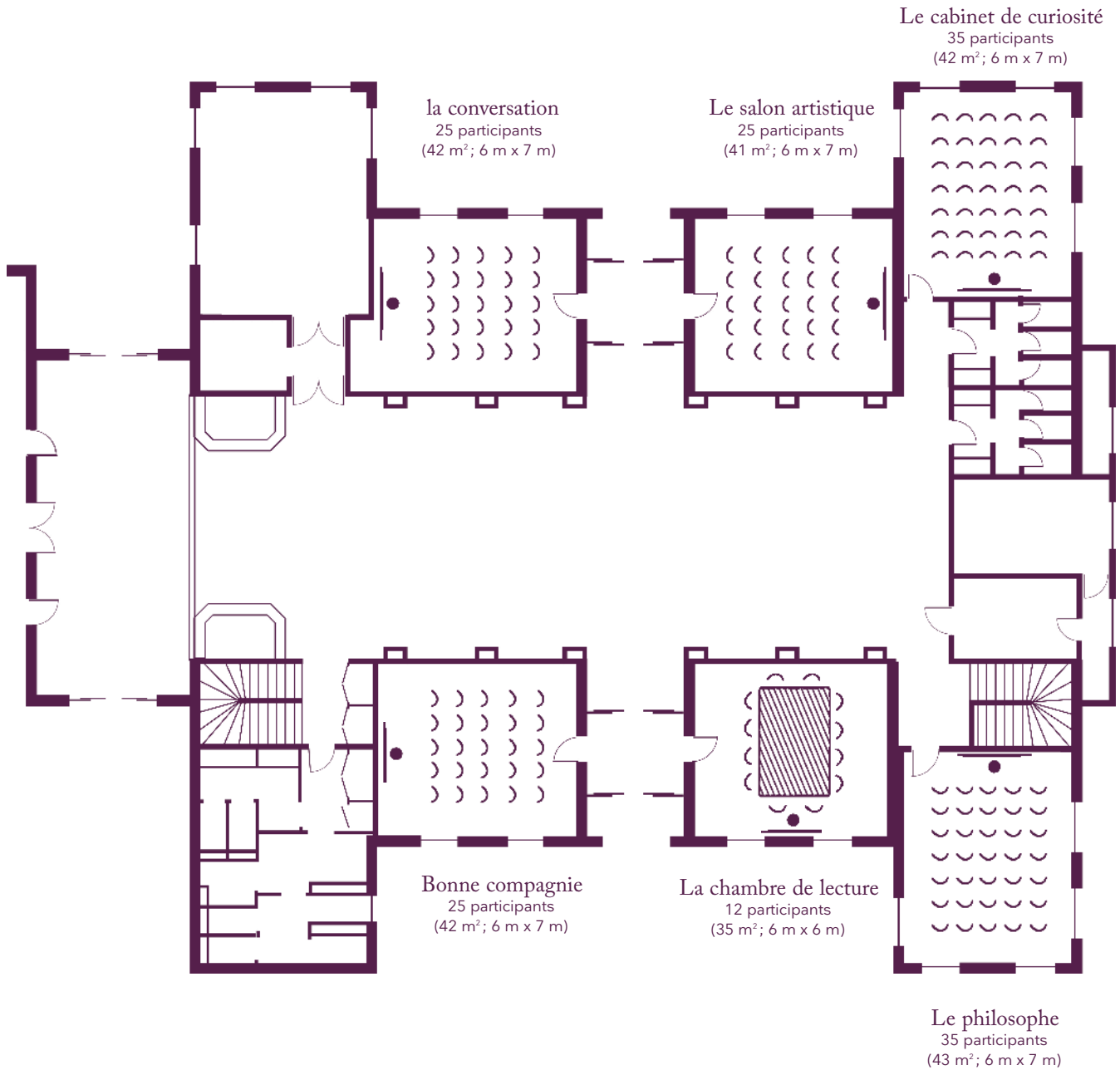
The home of seminars
Châteauform'

Domaine de Béhoust

Your meeting rooms

Room layouts adapted to your specific meeting requirements

The Academies - Ground floor



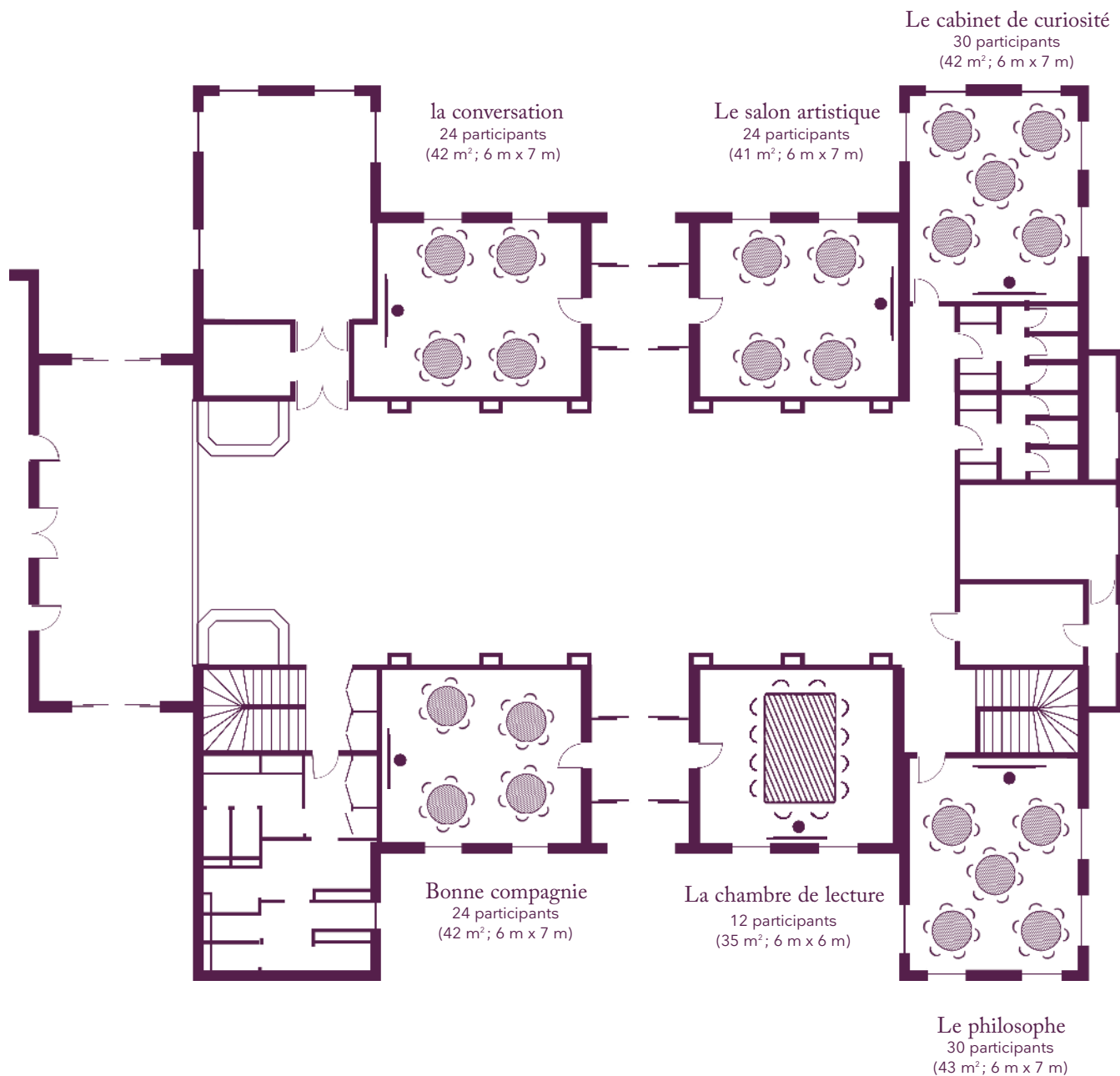
The home of seminars
Châteauform'

Domaine de Béhoust

Your meeting rooms

Room layouts adapted to your specific meeting requirements

The Academies - Ground floor



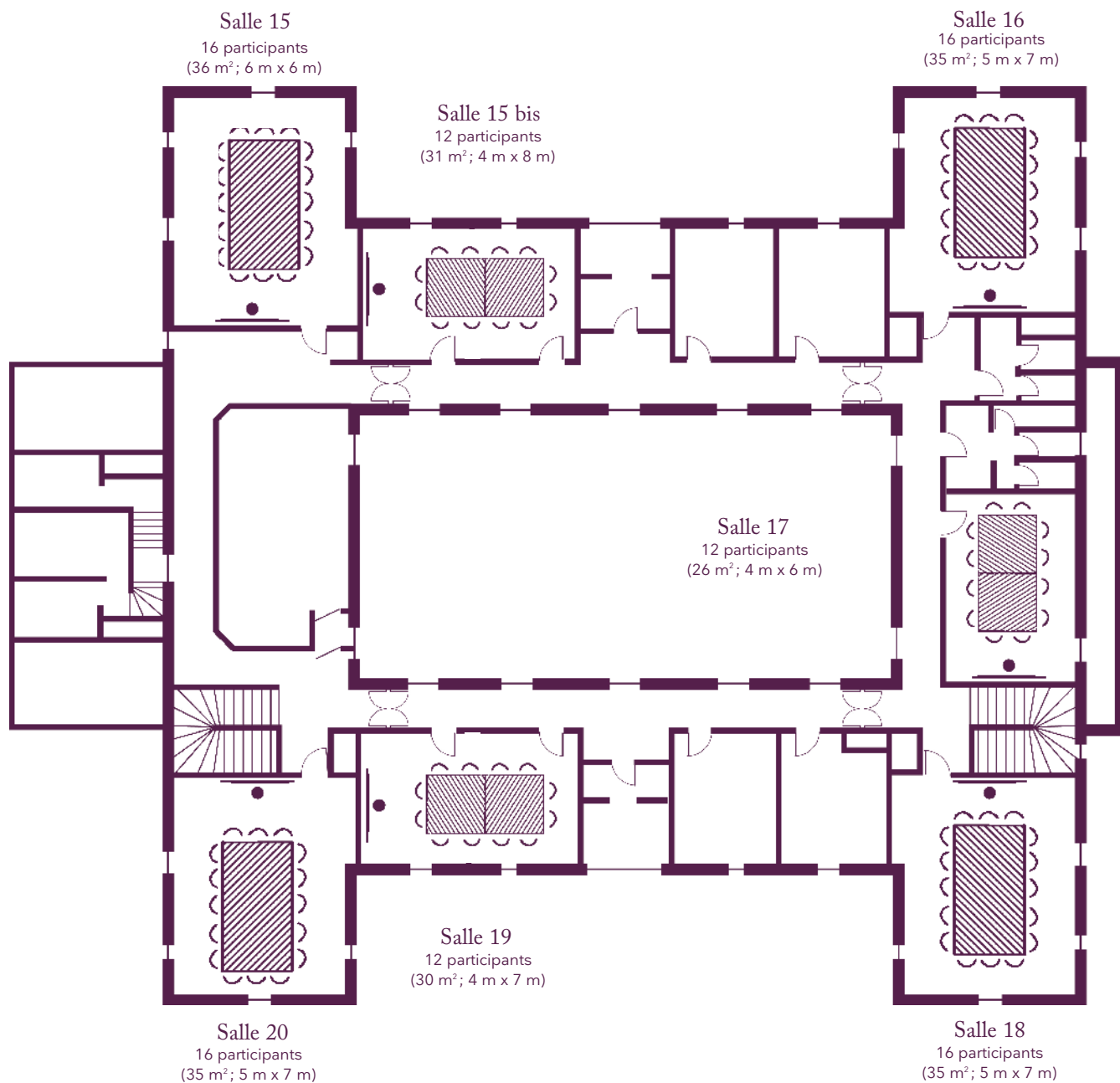
The home of seminars
Châteauform'

Domaine de Béhoust

Your meeting rooms

Room layouts adapted to your specific meeting requirements

The Academies - 1st floor



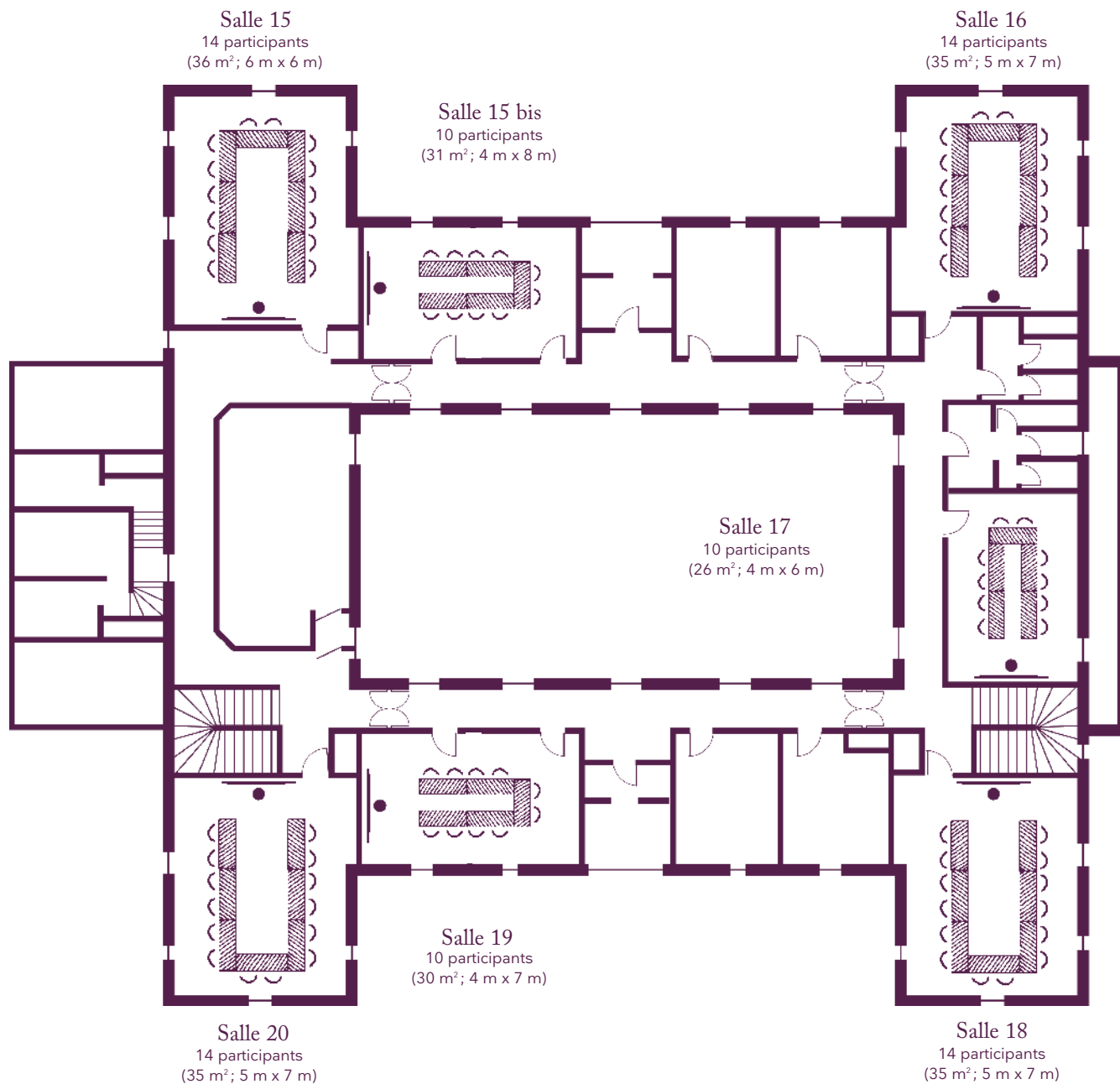
The home of seminars
Châteauform'

Domaine de Béhoust

Your meeting rooms

Room layouts adapted to your specific meeting requirements

The Academies - 1st floor



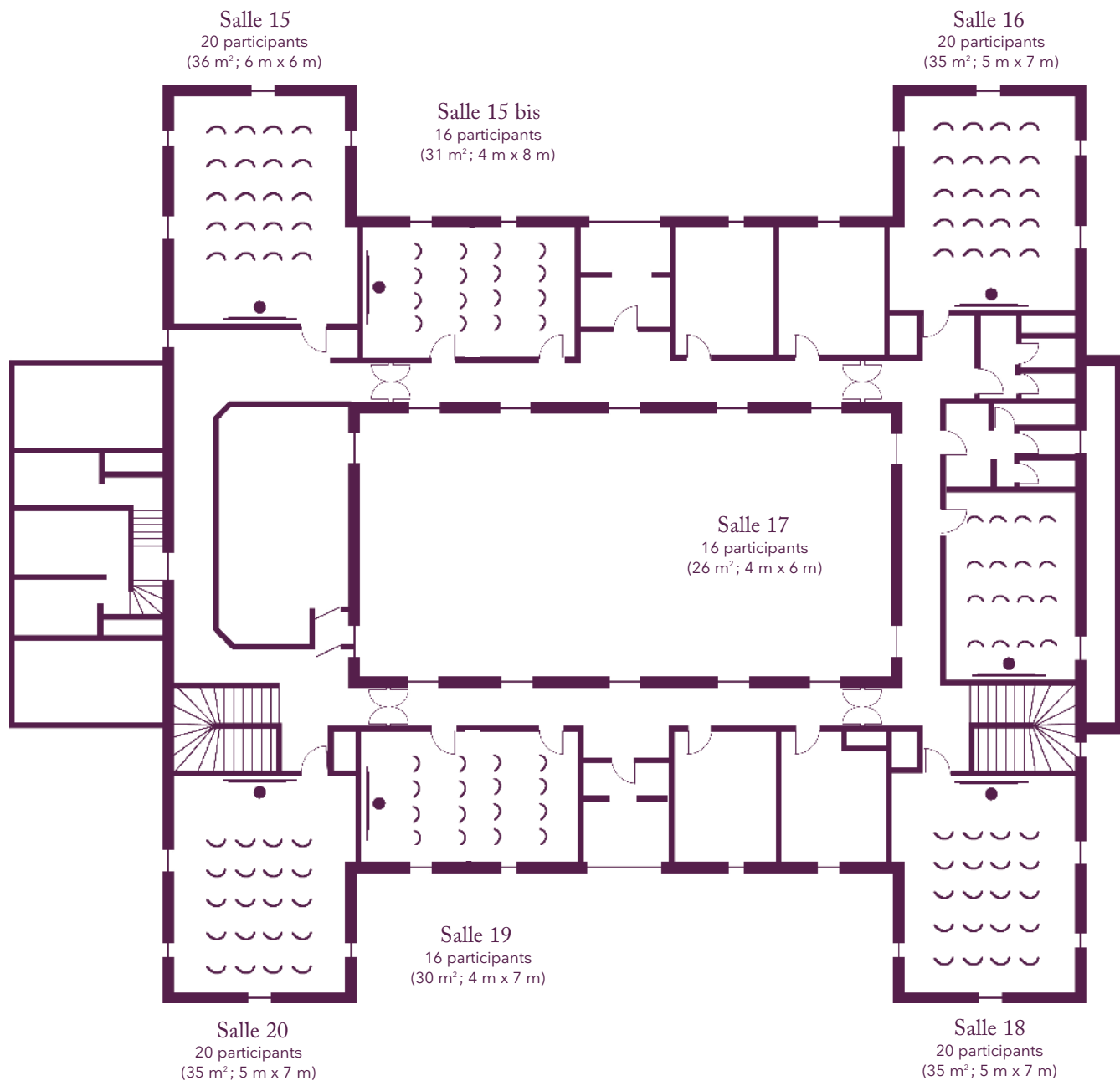
The home of seminars
Châteauform'

Domaine de Béhoust

Your meeting rooms

Room layouts adapted to your specific meeting requirements

The Academies - 1st floor



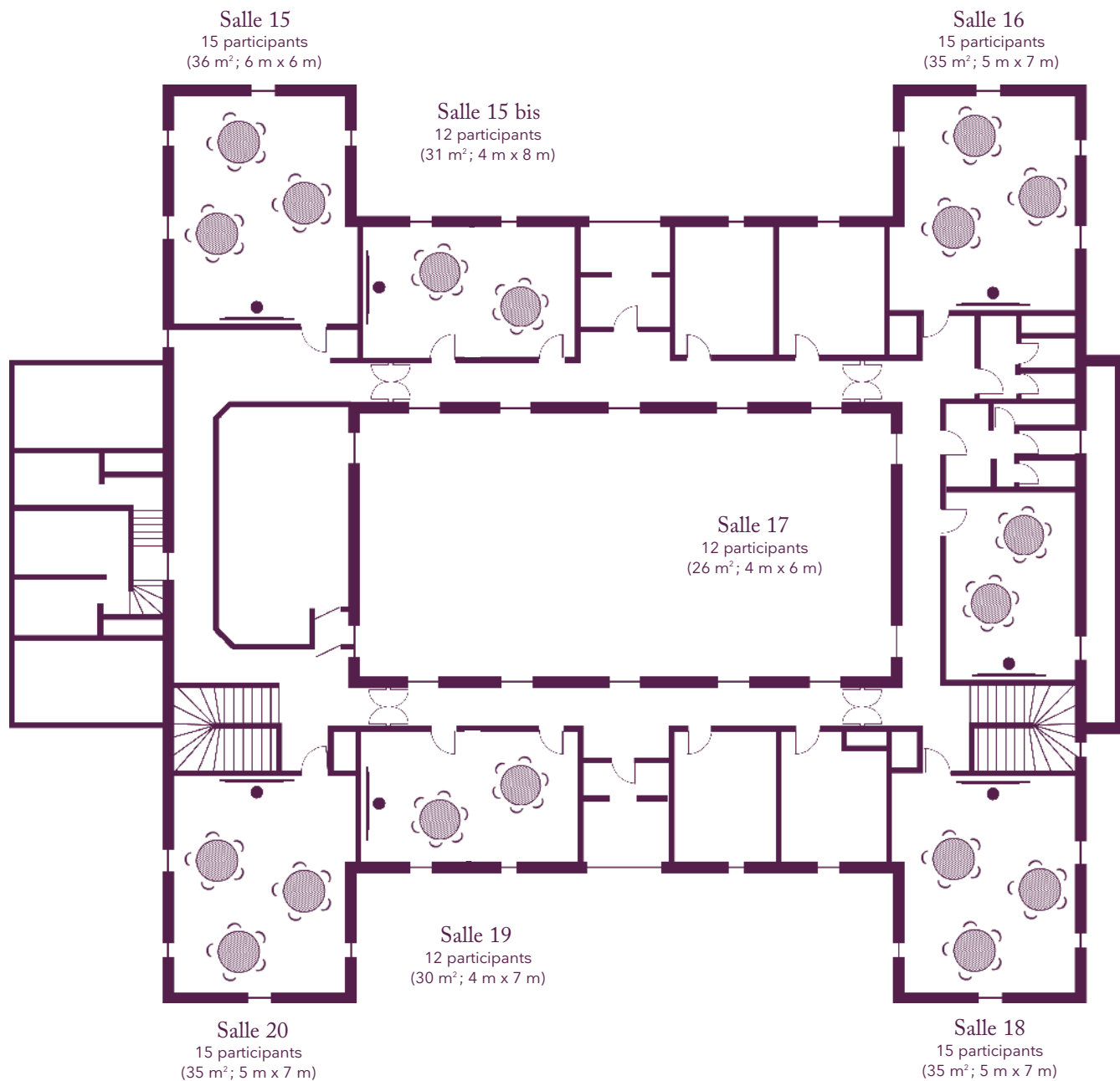
The home of seminars
Châteauform'

Domaine de Béhoust

Your meeting rooms

Room layouts adapted to your specific meeting requirements

The Academies - 1st floor



The home of seminars
Châteauform'

Domaine de Béhoust

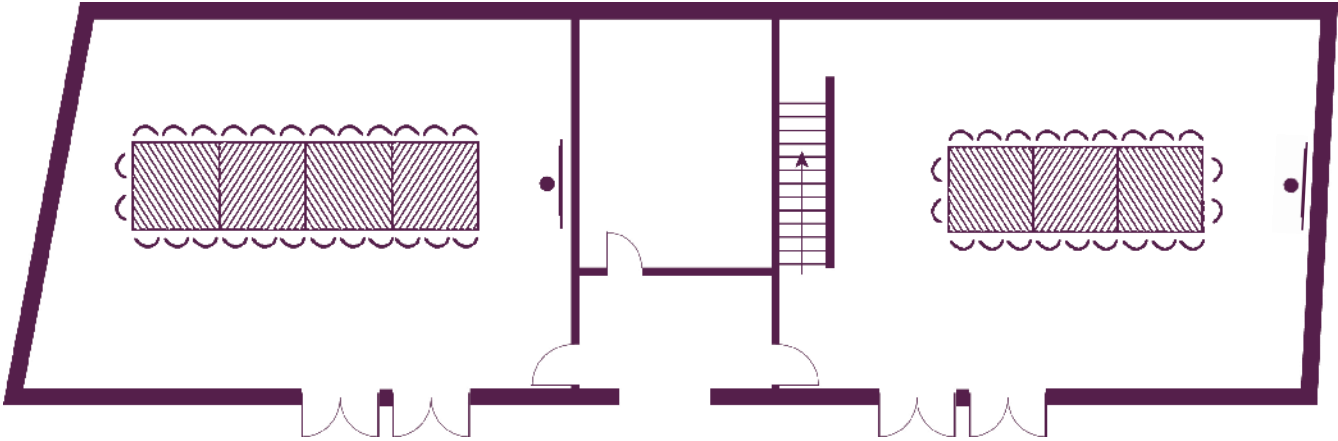
Your meeting rooms

Room layouts adapted to your specific meeting requirements

Literary salons

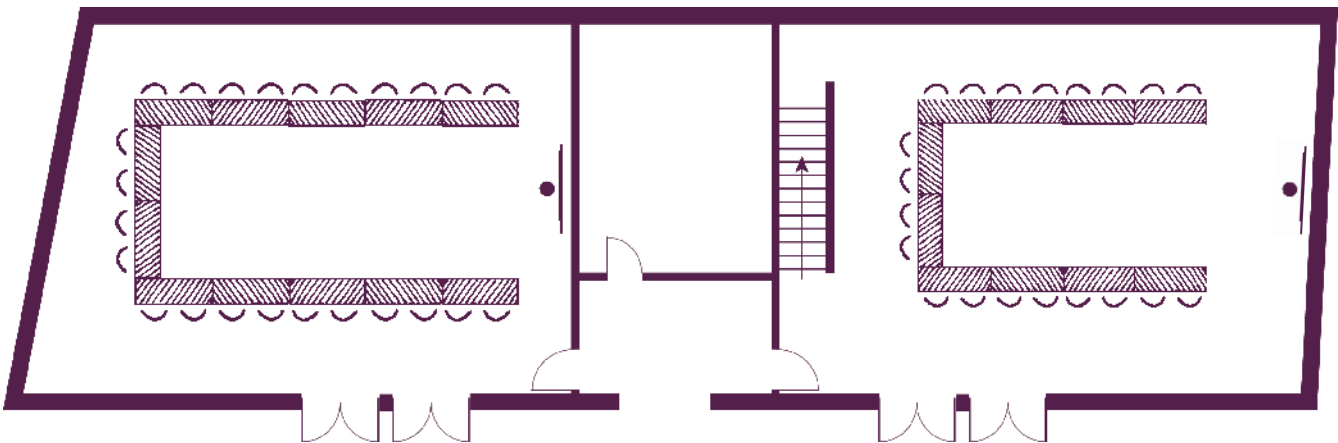
Madame du Deffand
26 participants
(58 m²; 6 m x 9 m)

Madame Lambert
22 participants
(57 m²; 6 m x 9 m)



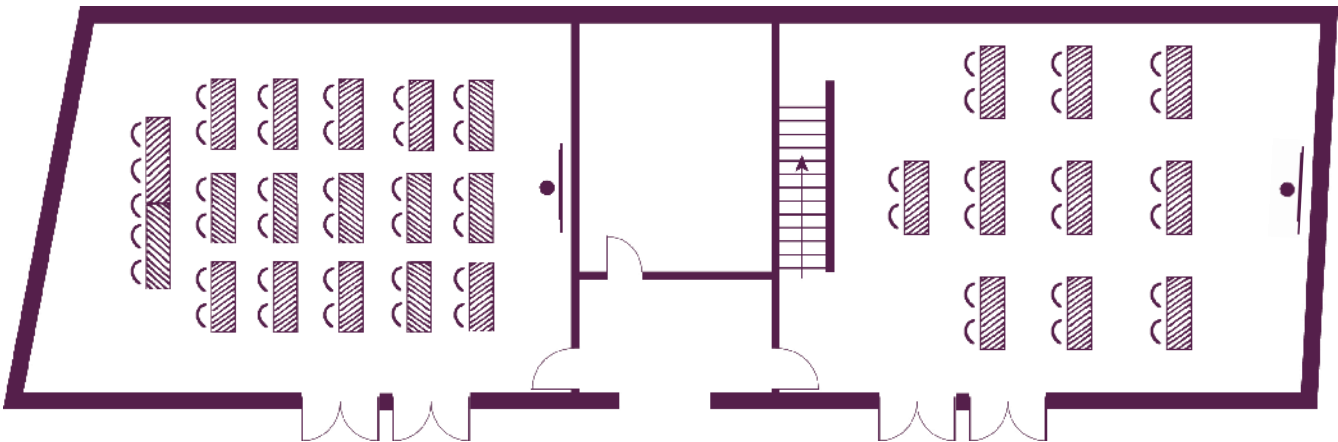
Madame du Deffand
24 participants
(58 m²; 6 m x 9 m)

Madame Lambert
20 participants
(57 m²; 6 m x 9 m)



Madame du Deffand
35 participants
(58 m²; 6 m x 9 m)

Madame Lambert
20 participants
(57 m²; 6 m x 9 m)



Your meeting rooms

Room layouts adapted to your specific meeting requirements

Literary salons

Madame du Deffand

50 participants
(58 m²; 6 m x 9 m)

Madame Lambert

30 participants
(57 m²; 6 m x 9 m)



Madame du Deffand

35 participants
(58 m²; 6 m x 9 m)

Madame Lambert

24 participants
(57 m²; 6 m x 9 m)

