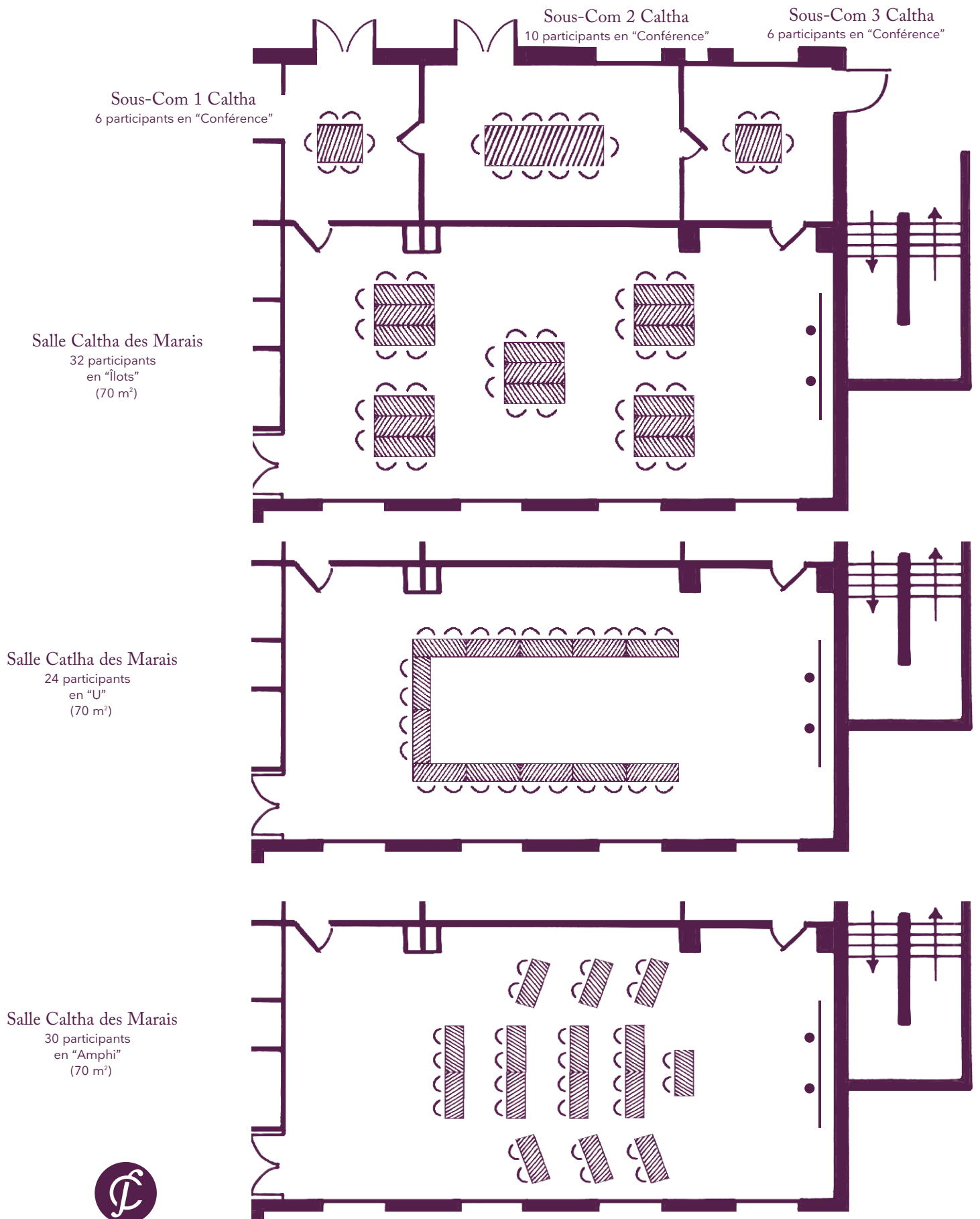


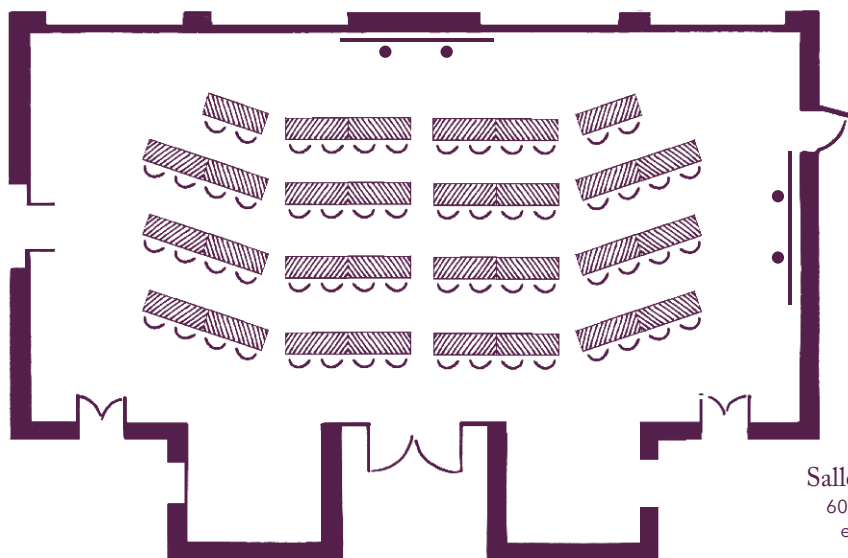
Vos salles de réunion

La disposition en fonction de vos objectifs

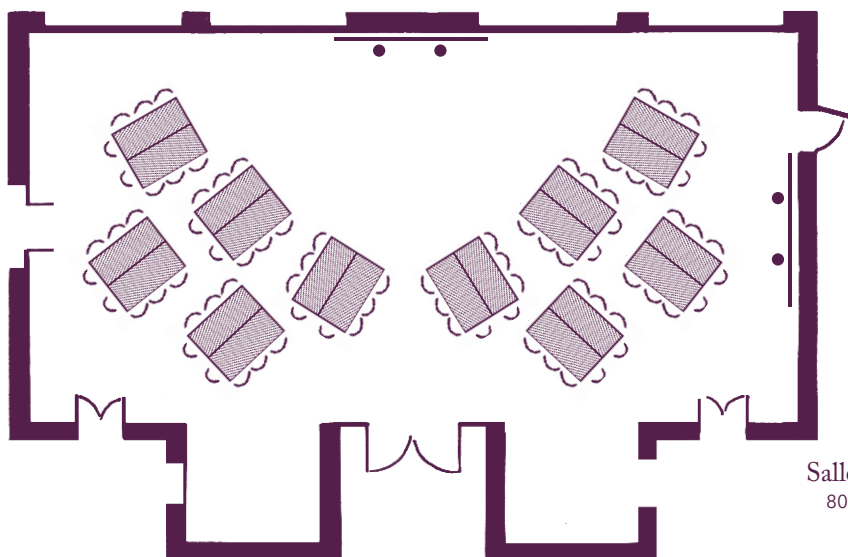


Vos salles de réunion

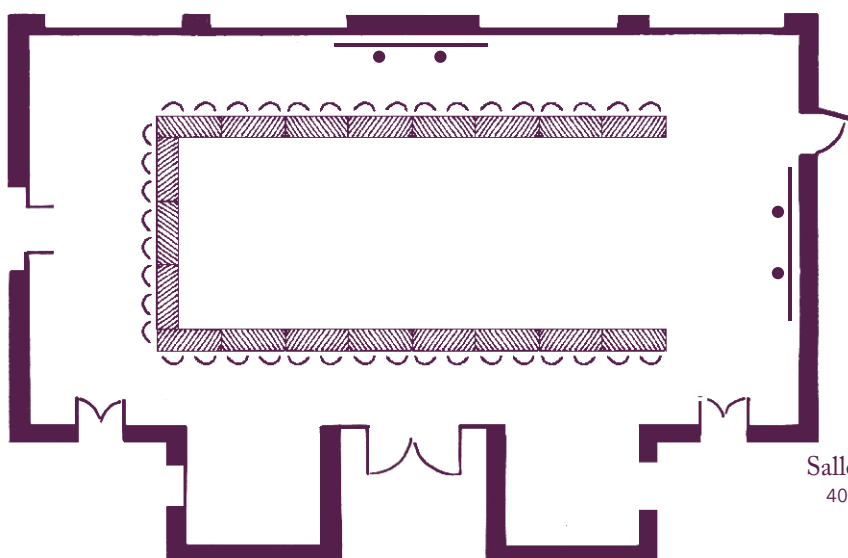
La disposition en fonction de vos objectifs



Salle Gypsophile
60 participants
en "Amphi"
(115 m²)



Salle Gypsophile
80 participants
en "îlots"
(115 m²)

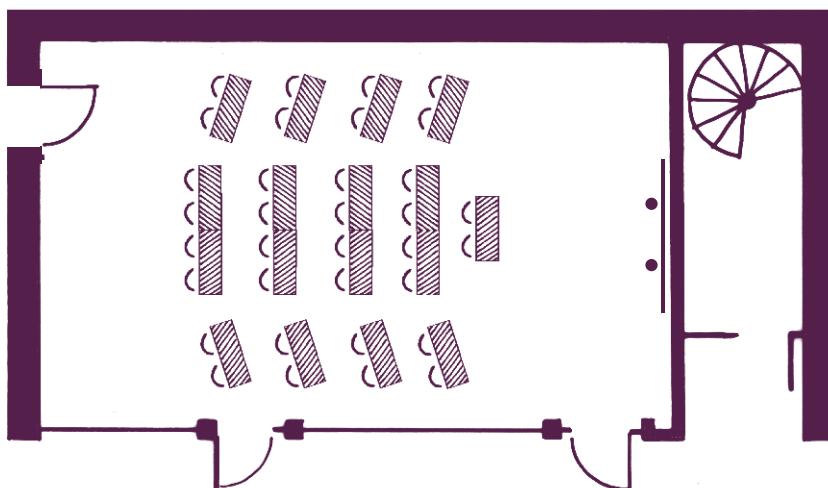


Salle Gypsophile
40 participants
en "U"
(115 m²)

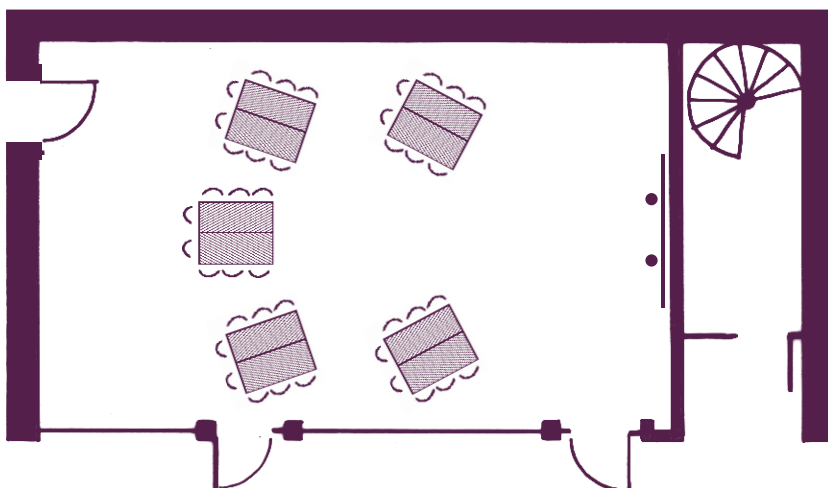


Vos salles de réunion

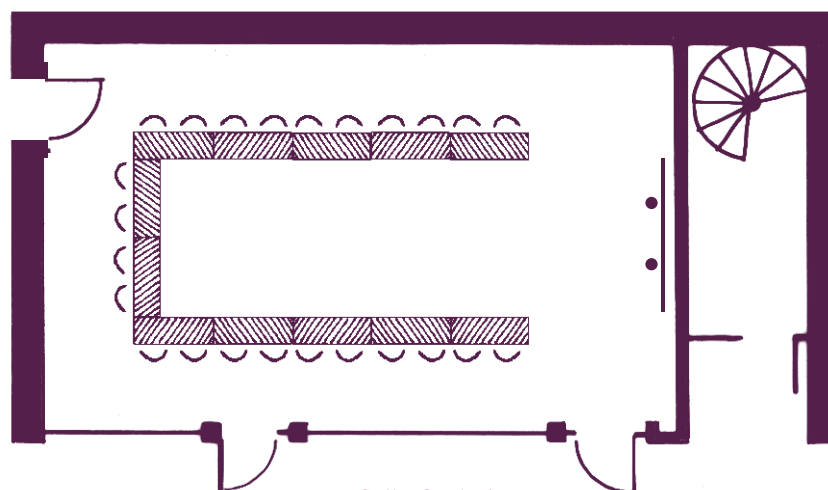
La disposition en fonction de vos objectifs



Salle Orchidée
34 participants en "Amphi"
(64 m²)



Salle Orchidée
40 participants en "îlots"
(64 m²)

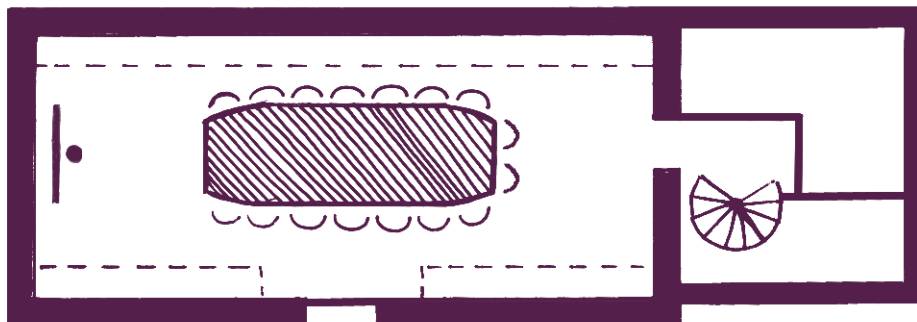


Salle Orchidée
24 participants en "U"
(64 m²)



Vos salles de réunion

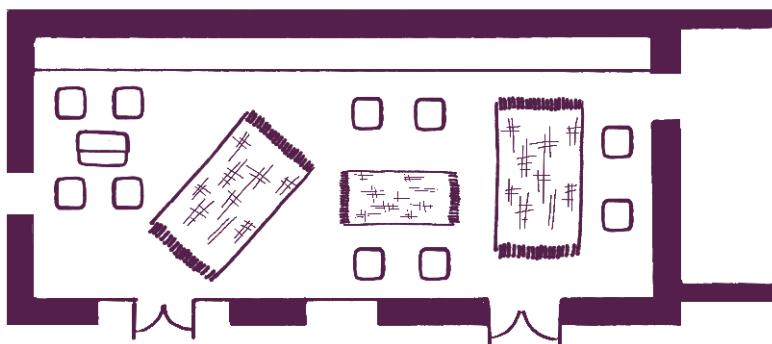
La disposition en fonction de vos objectifs



Salle Pied de loup
16 participants en "Conférence"
(40 m²)



Salle Ronce des Haies
20 participants en "U"
(50 m²)

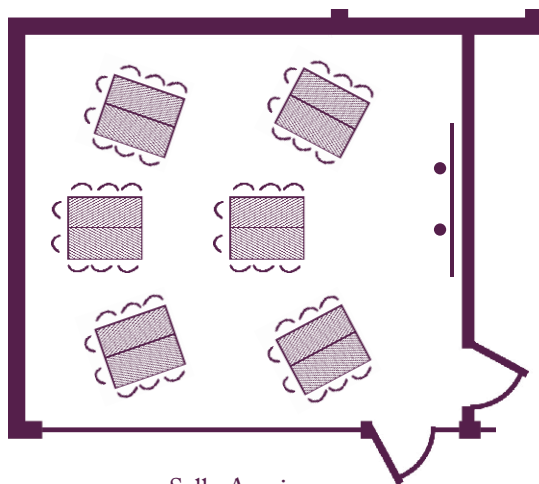
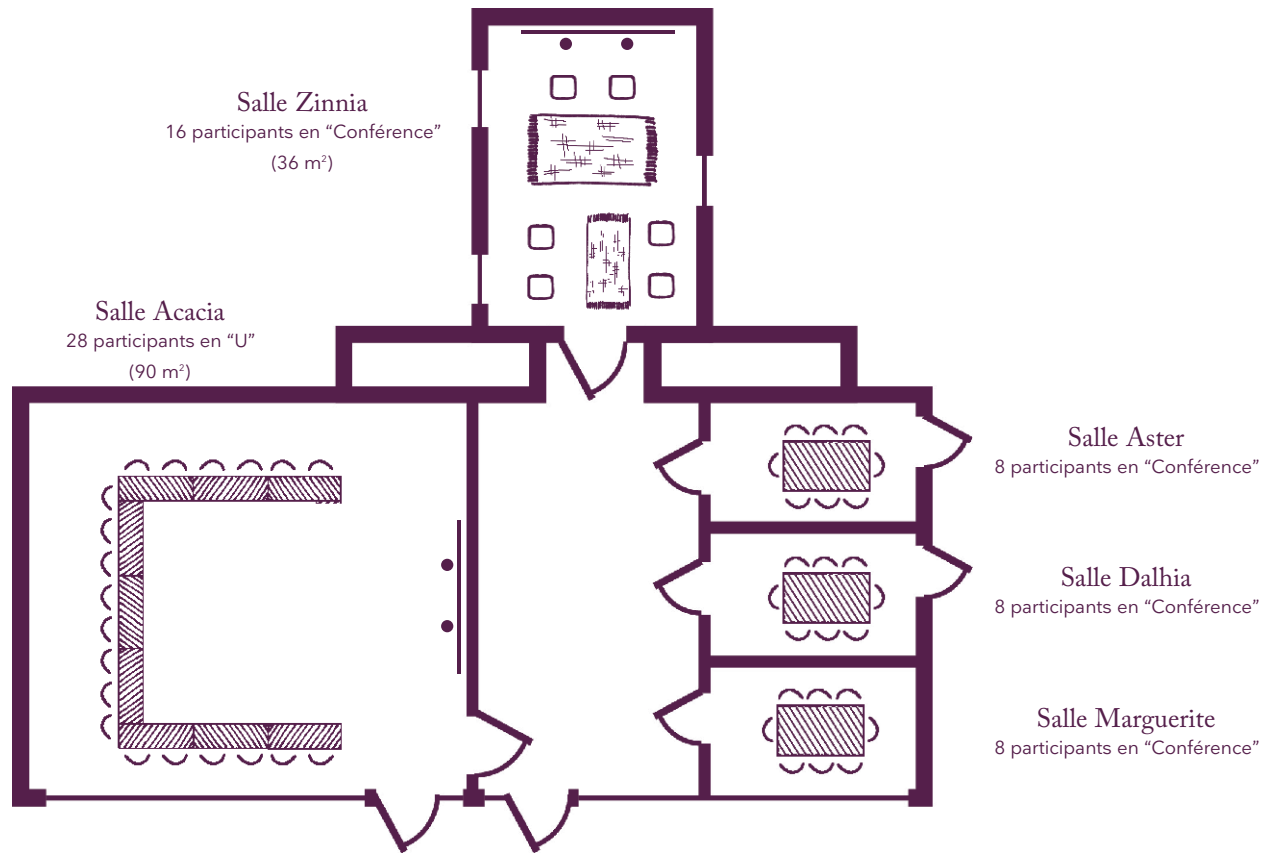


Salle Ronce des Haies
Poufs et tapis
(50 m²)

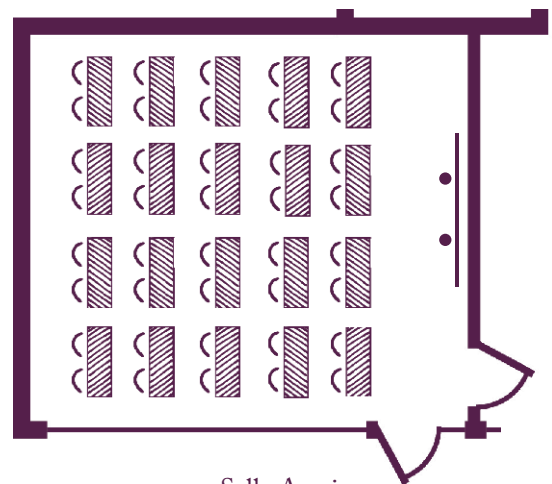


Vos salles de réunion

La disposition en fonction de vos objectifs



Salle Acacia
48 participants en "îlots"
(90 m²)

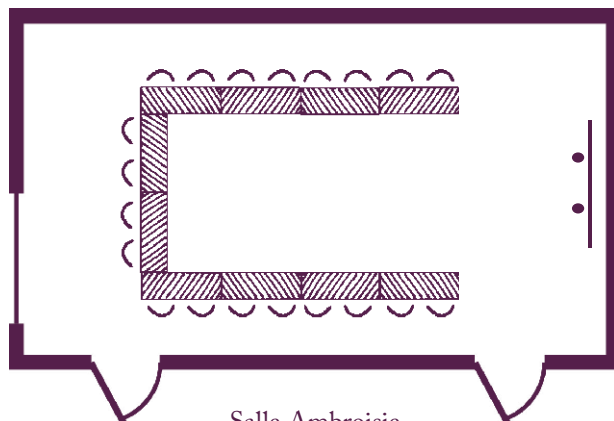


Salle Acacia
40 participants en "Classe"
(90 m²)

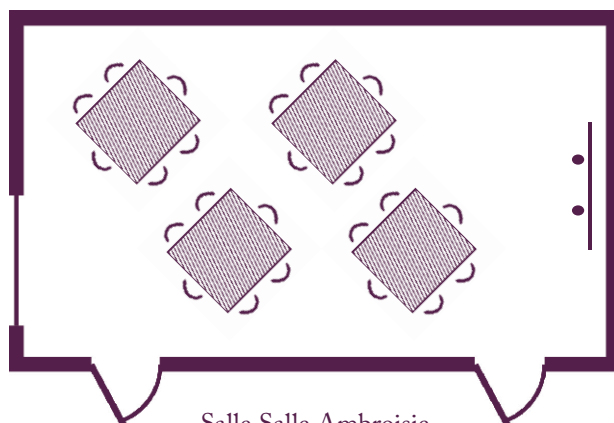


Vos salles de réunion

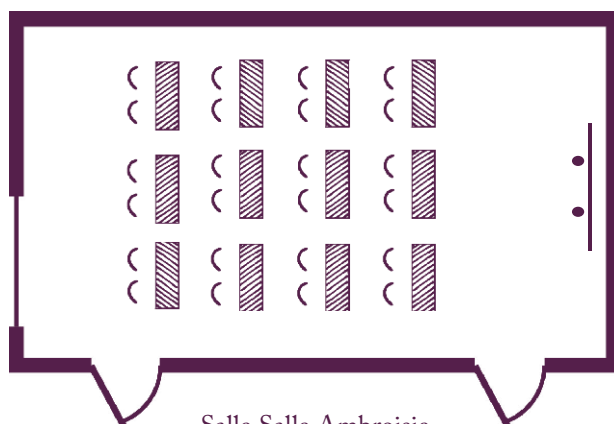
La disposition en fonction de vos objectifs



Salle Ambroisie
18 participants en "U"
(48 m²)



Salle Salle Ambroisie
18 participants en "flots"
(48 m²)



Salle Salle Ambroisie
24 participants en "Classe"
(48 m²)



Plan détaillé

