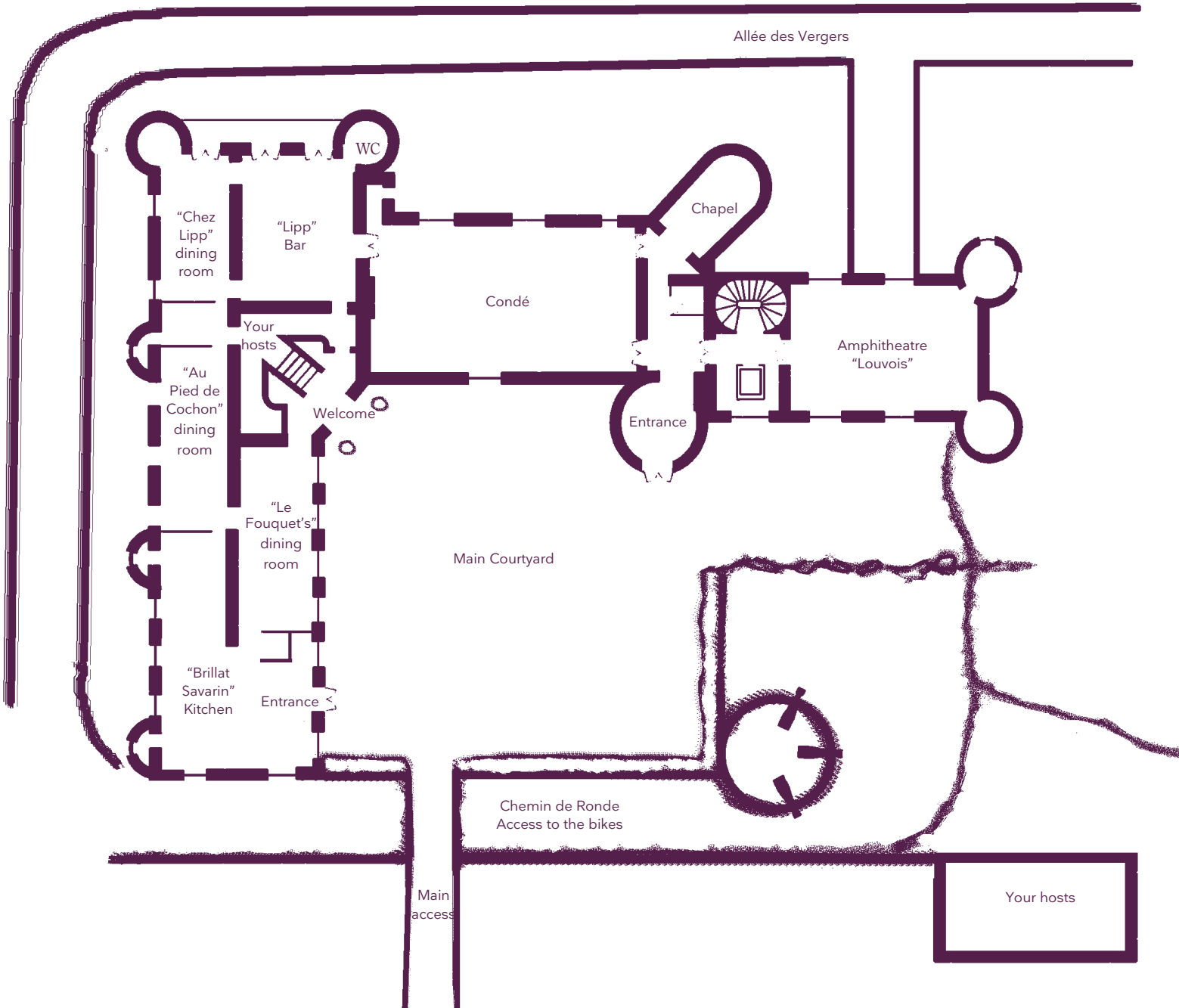


Your meeting rooms

Room layouts adapted to your specific meeting requirements

Ground floor

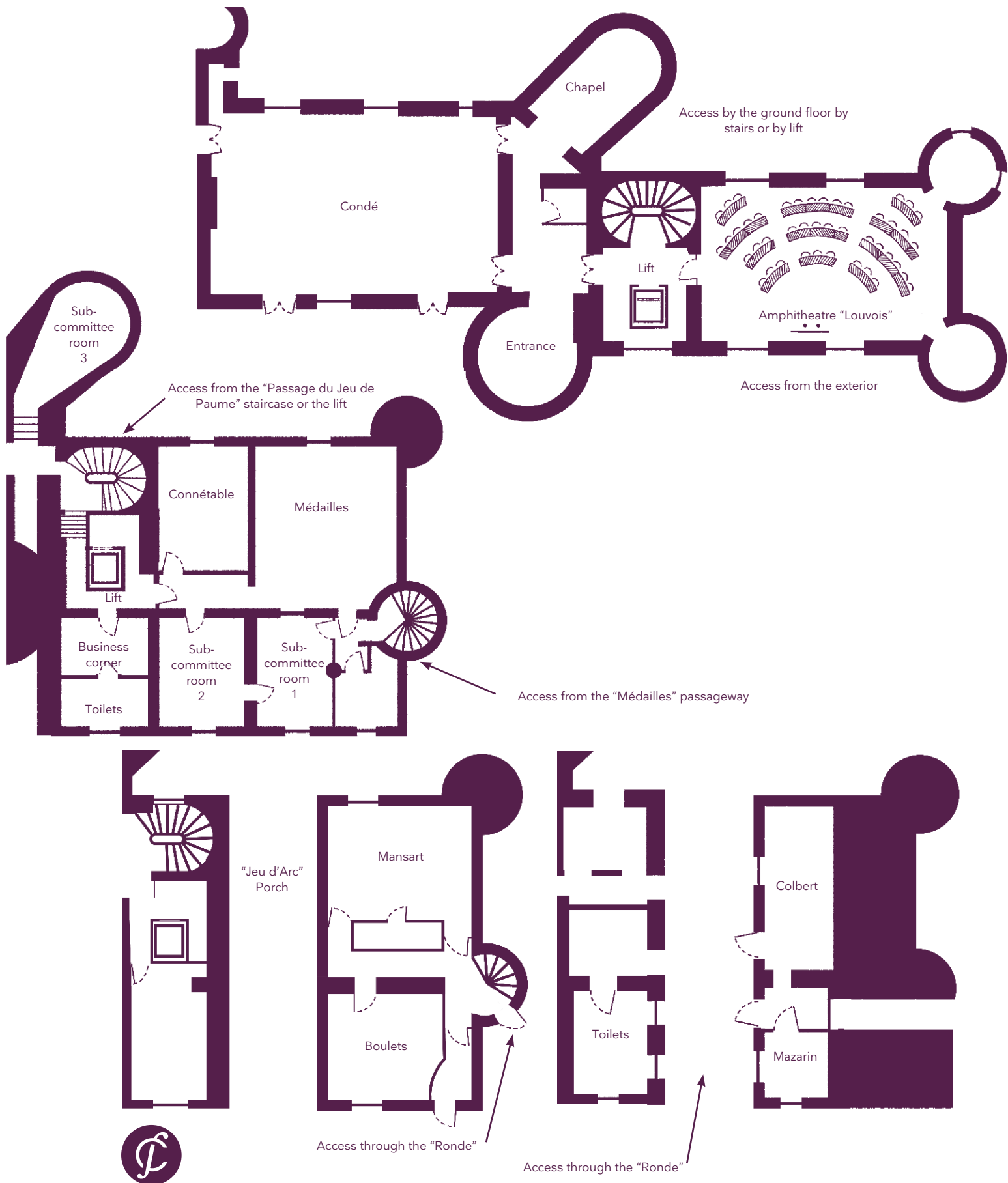


The home of seminars
Châteauform'

La Forteresse de Mello

Your meeting rooms

Room layouts adapted to your specific meeting requirements



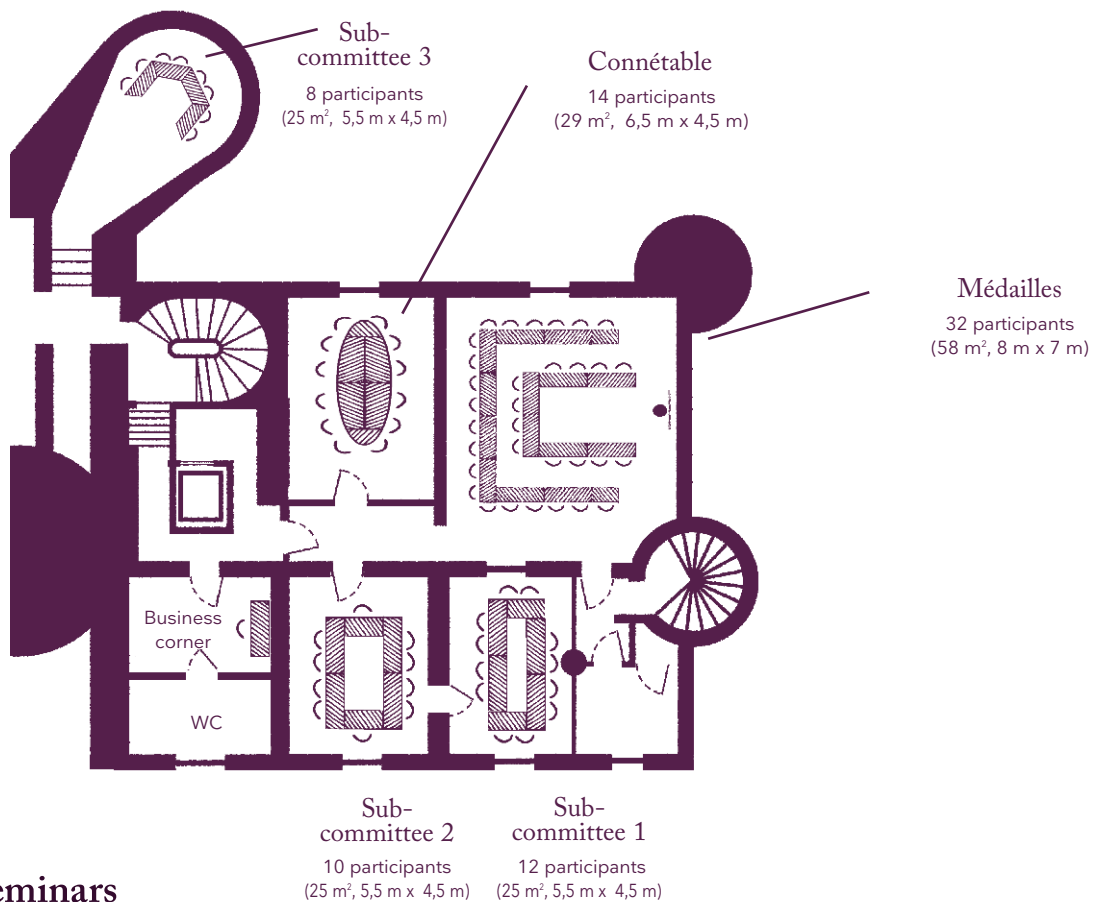
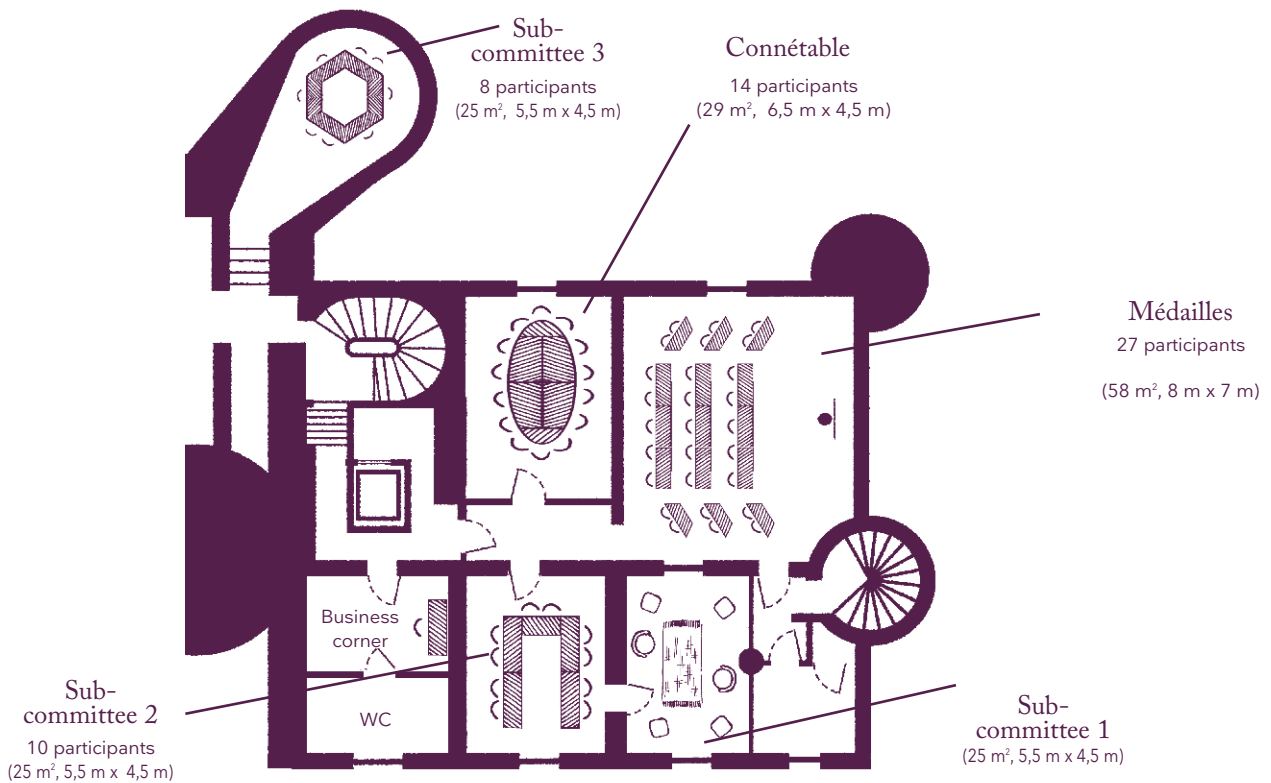
The home of seminars
Châteauform'

La Forteresse de Mello

Your meeting rooms

Room layouts adapted to your specific meeting requirements

One level below the ground floor



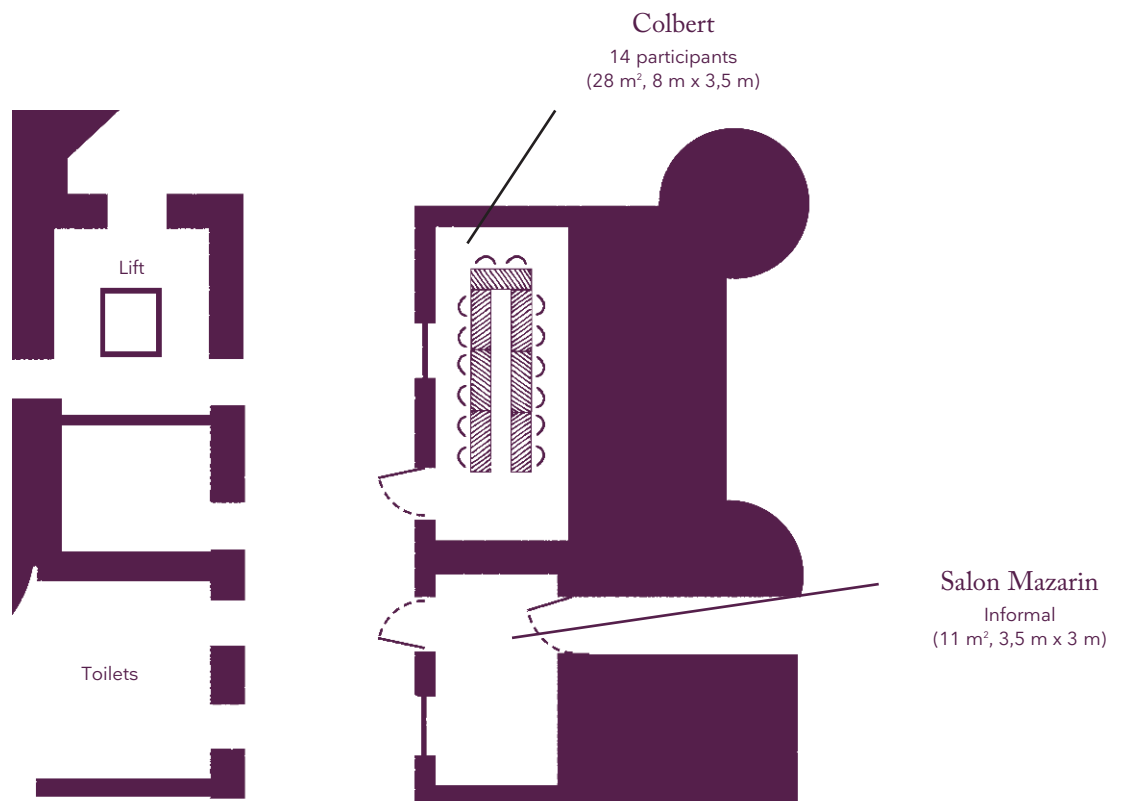
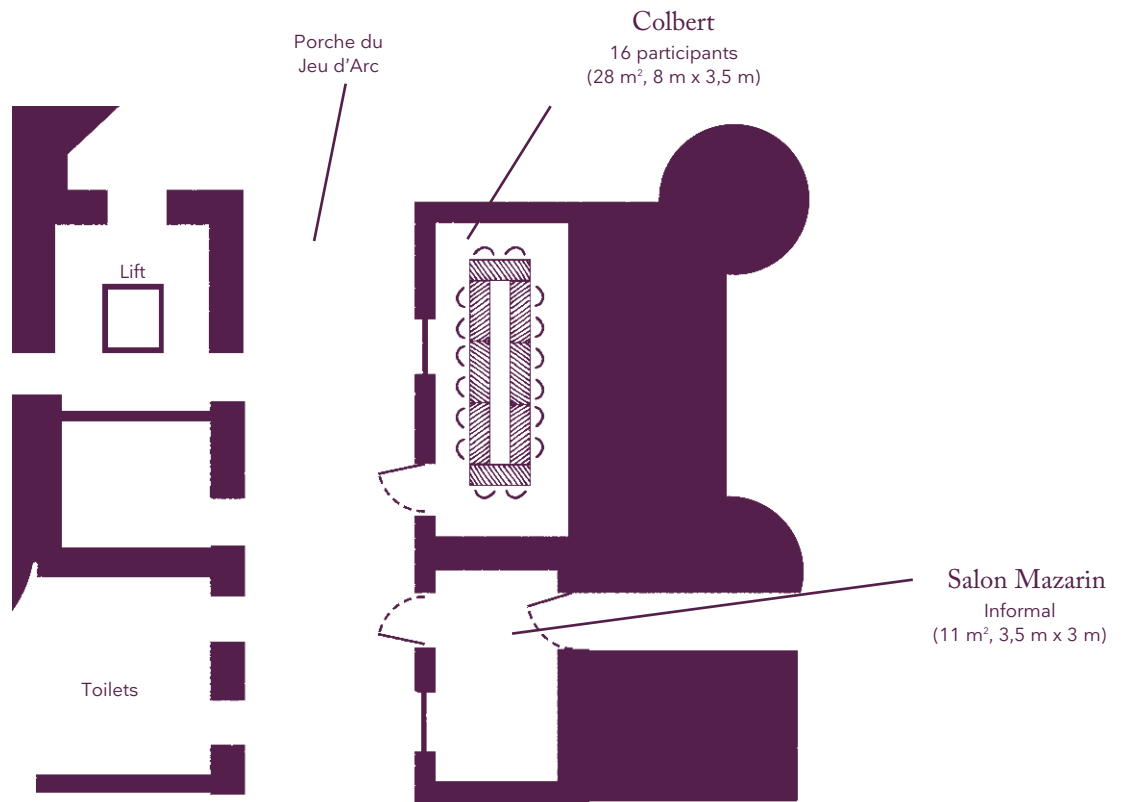
The home of seminars
Châteauform'

La Forteresse de Mello

Your meeting rooms

Room layouts adapted to your specific meeting requirements

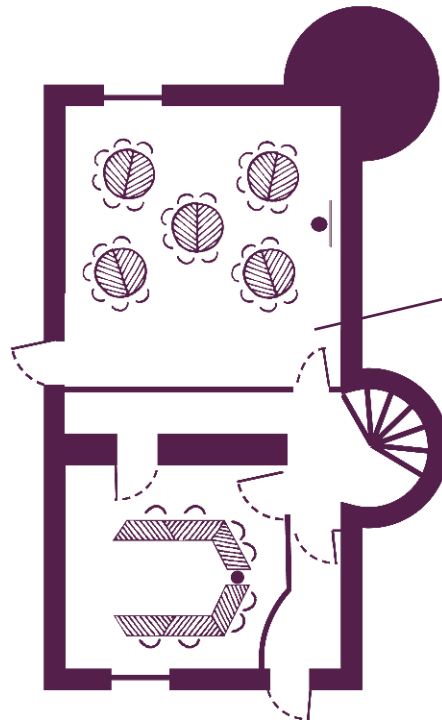
Access through porch level -3



Your meeting rooms

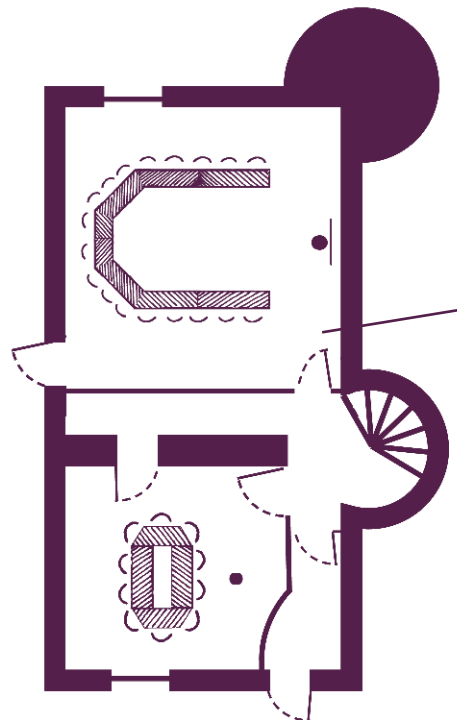
Room layouts adapted to your specific meeting requirements

Access by the moats



Mansart
30 participants
(42 m², 7 m x 6 m)

Boulets
8 participants
(25 m², 5 m x 5 m)



Mansart
18 participants
(42 m², 7 m x 6 m)

Boulets
10 participants
(25 m², 5 m x 5 m)



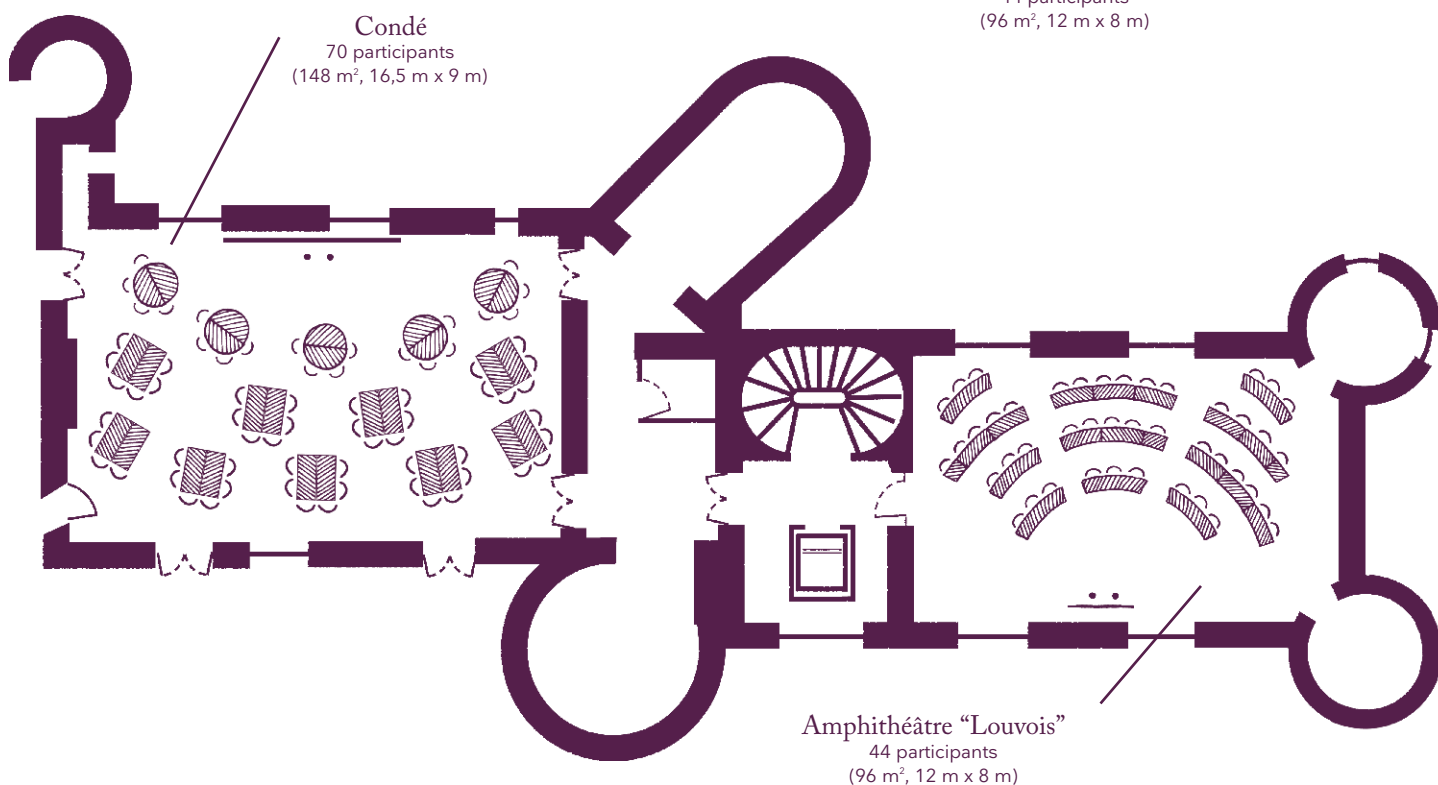
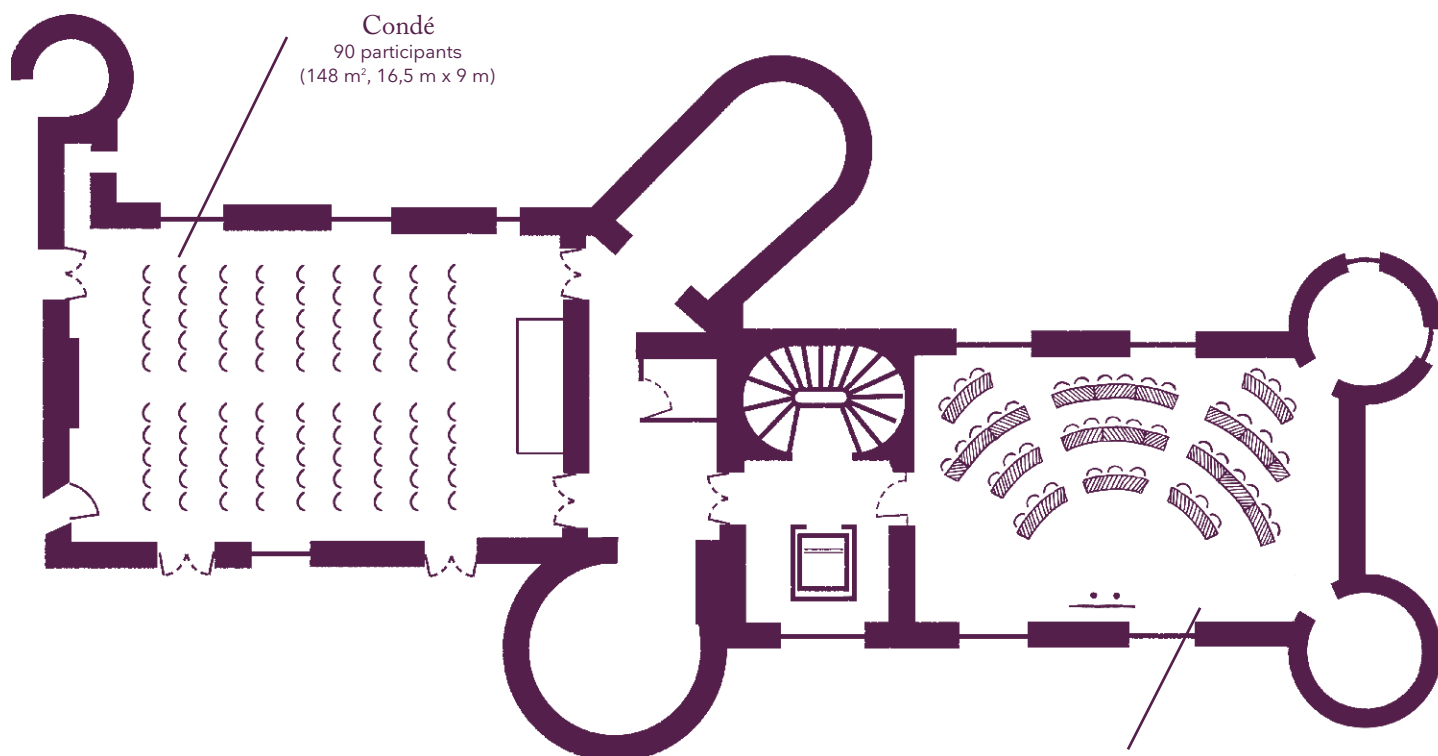
The home of seminars
Châteauform'

La Forteresse de Mello

Your meeting rooms

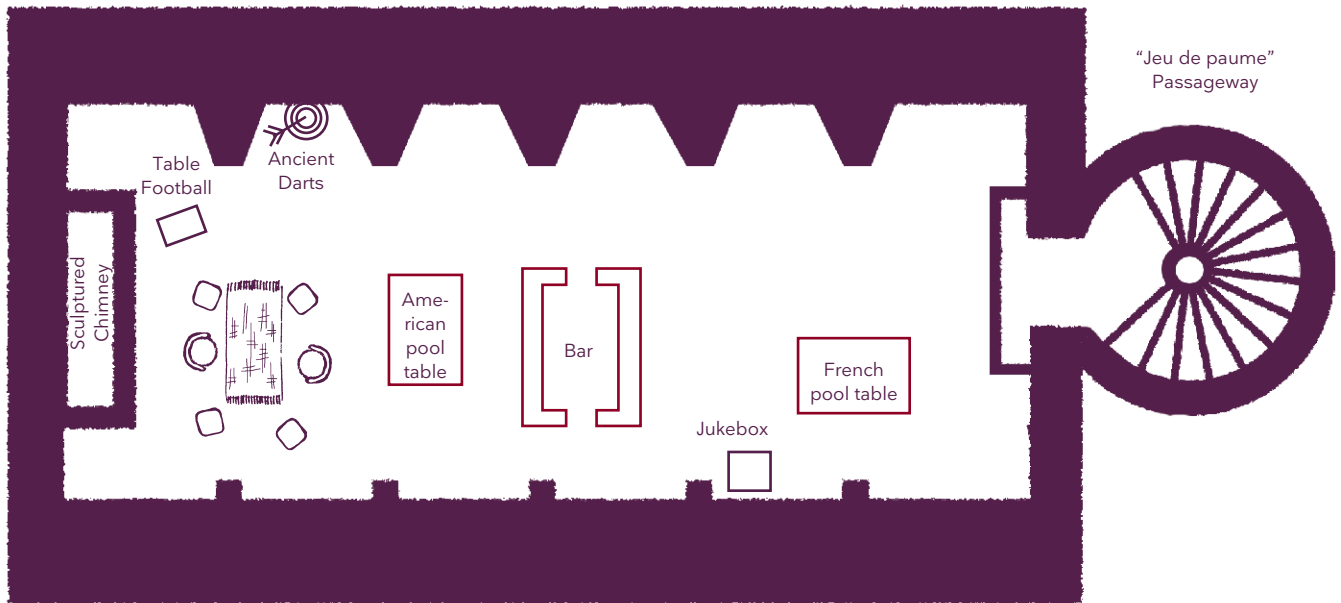
Room layouts adapted to your specific meeting requirements

Ground floor



Your meeting rooms

Room layouts adapted to your specific meeting requirements



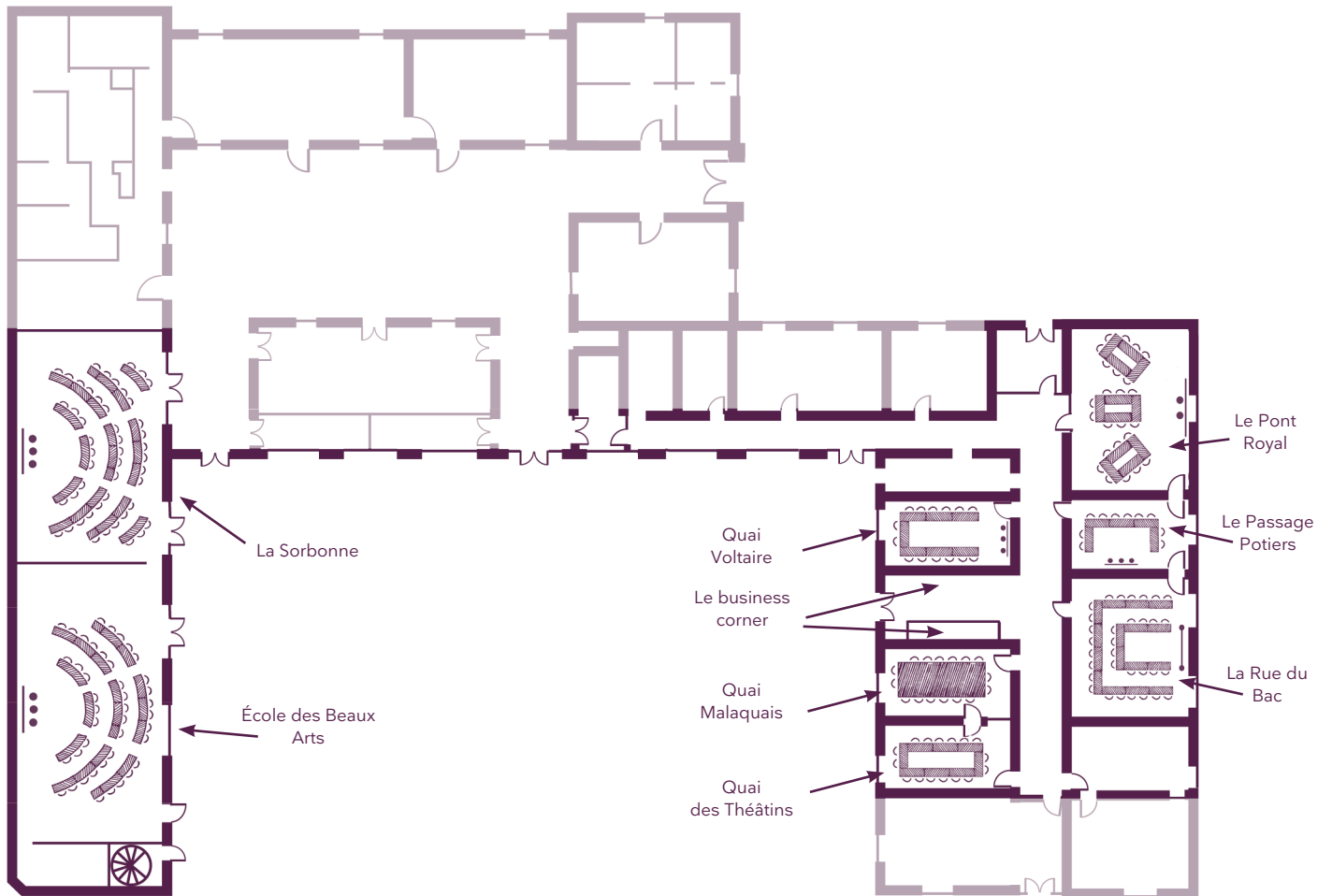
The home of seminars
Châteauform'

La Forteresse de Mello

Your meeting rooms

Room layouts adapted to your specific meeting requirements

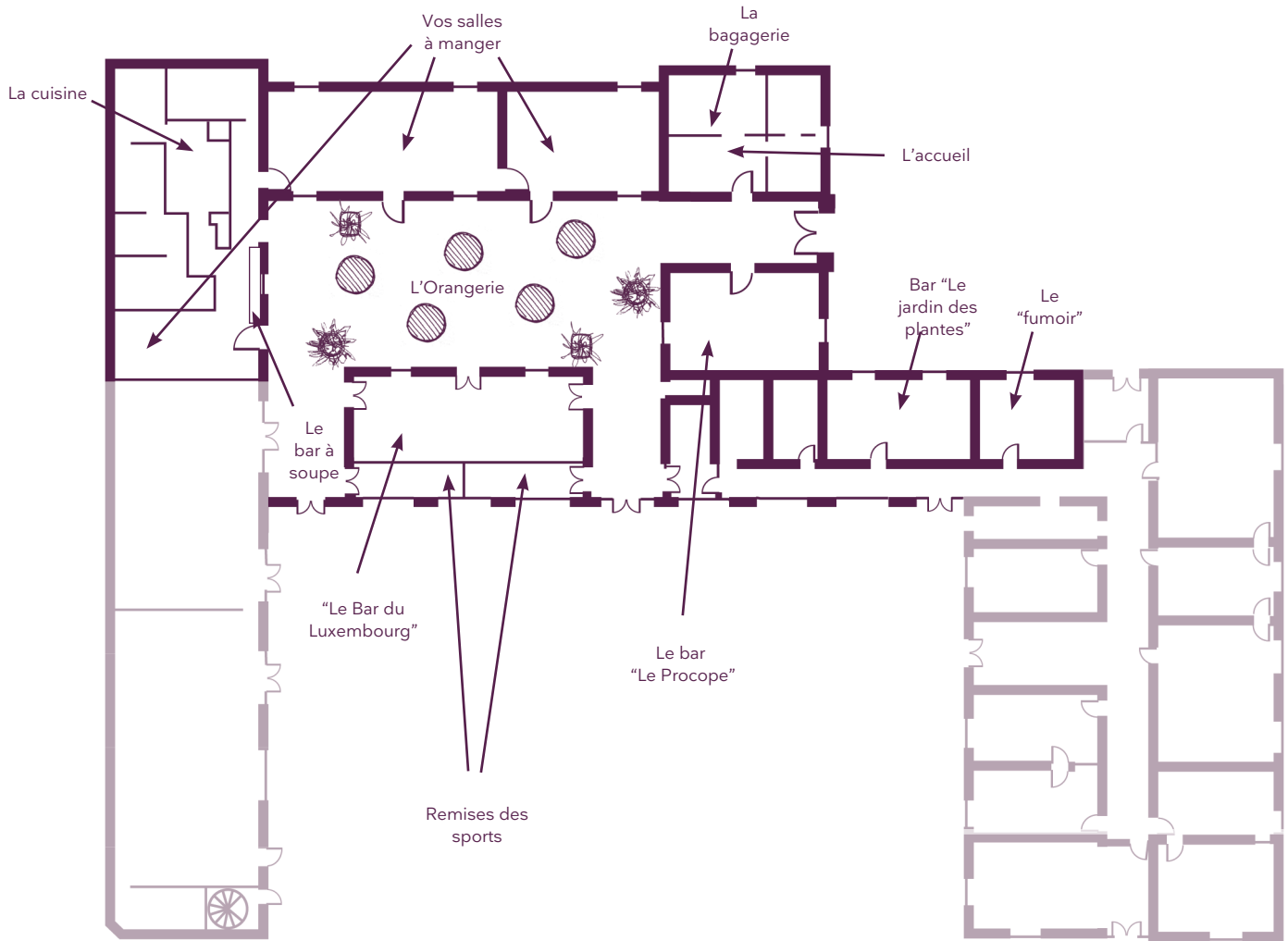
Ground floor



The home of seminars
Châteauform'

La Princesse de Mello

Your meeting rooms Vos salons Rez-de-jardin



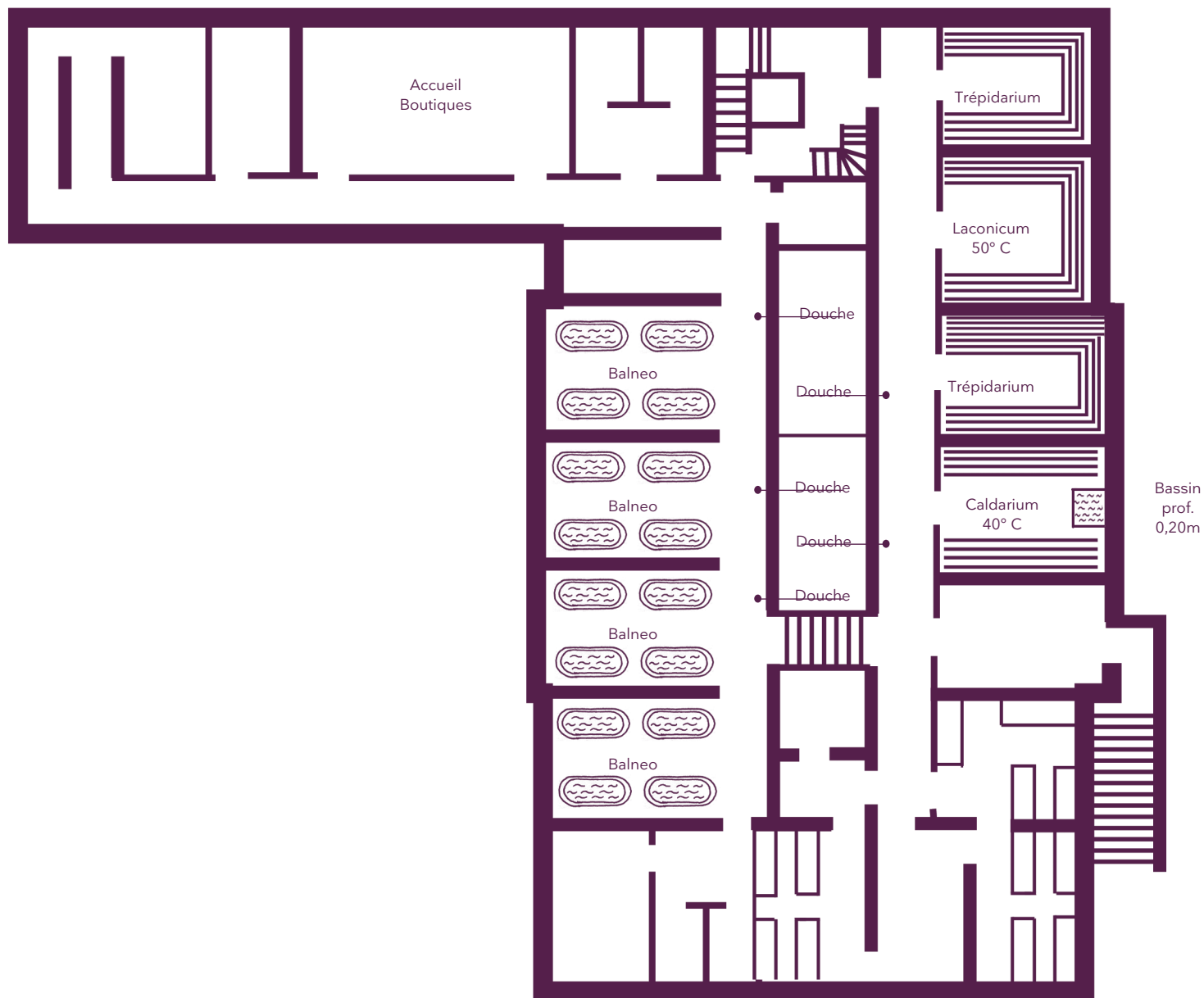
The home of seminars
Châteauform'

La Princesse de Mello

Your meeting rooms

Room layouts adapted to your specific meeting requirements

Balnea
Sous-sol



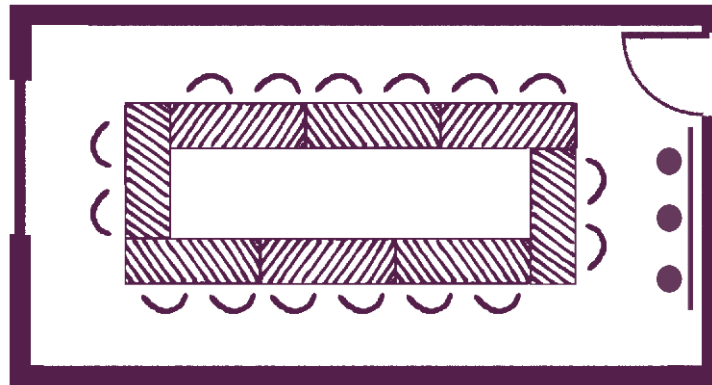
The home of seminars
Châteauform'

La Princesse de Mello

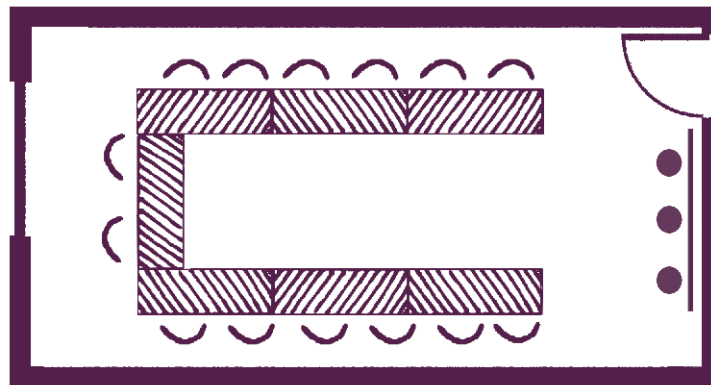
Your meeting rooms

Room layouts adapted to your specific meeting requirements

Ground floor



Quai Voltaire
16 participants
en "Conférence"
(27 m², 6,8 m x 4 m)



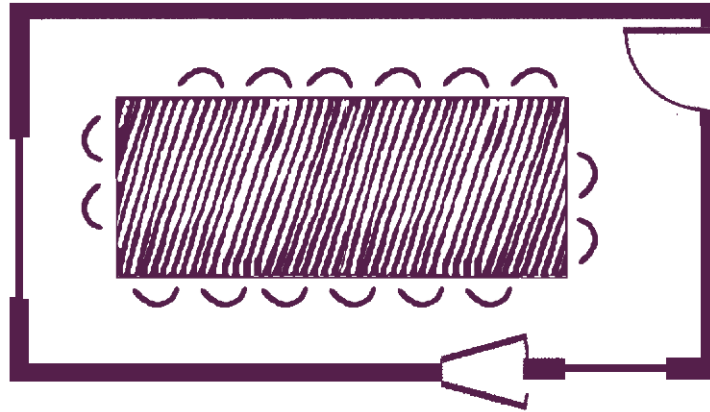
Quai Voltaire
14 participants
en "U"
(27 m², 6,8 m x 4 m)



Your meeting rooms

Room layouts adapted to your specific meeting requirements

Ground floor



Quai Malaquais
16 participants
en "Conférence"
(26 m², 6,8 m x 3,7 m)



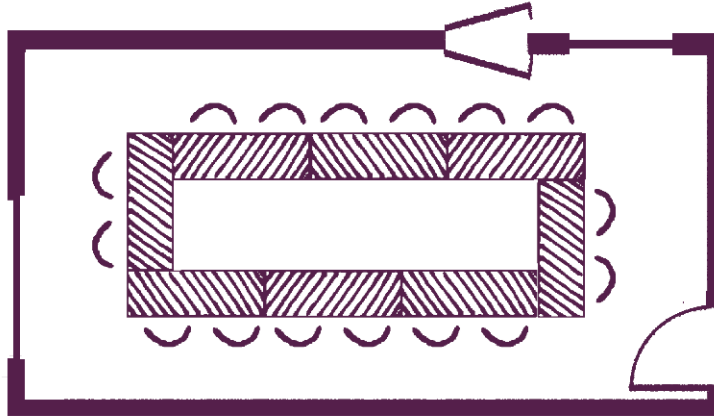
The home of seminars
Châteaufort'

La Princesse de Mello

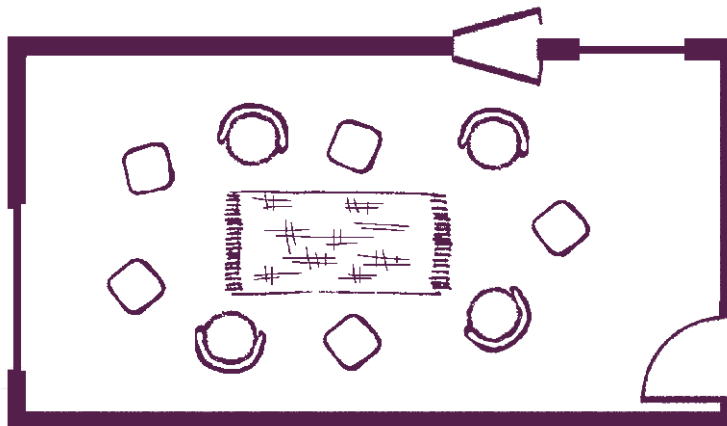
Your meeting rooms

Room layouts adapted to your specific meeting requirements

Ground floor



Quai des Théâtins
16 participants
en "Conférence"
(24 m², 6,6 m x 3,6 m)



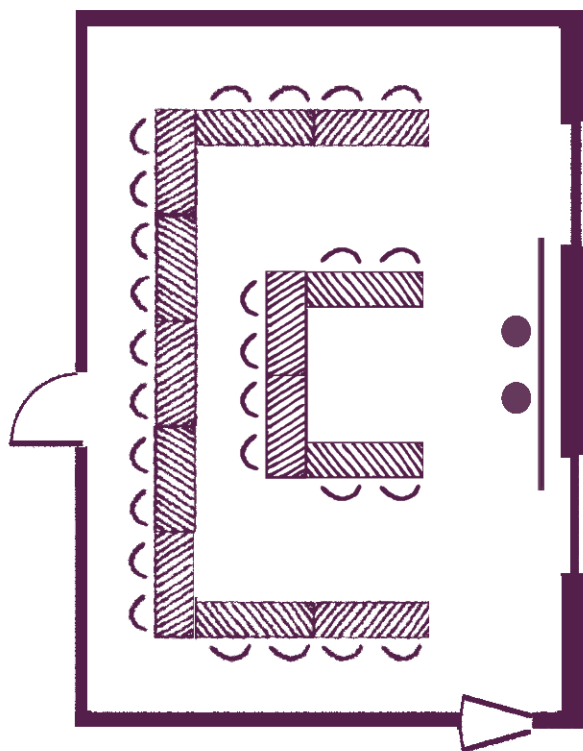
Quai des Théâtins
"Informelle"
(24 m², 6,6 m x 3,6 m)



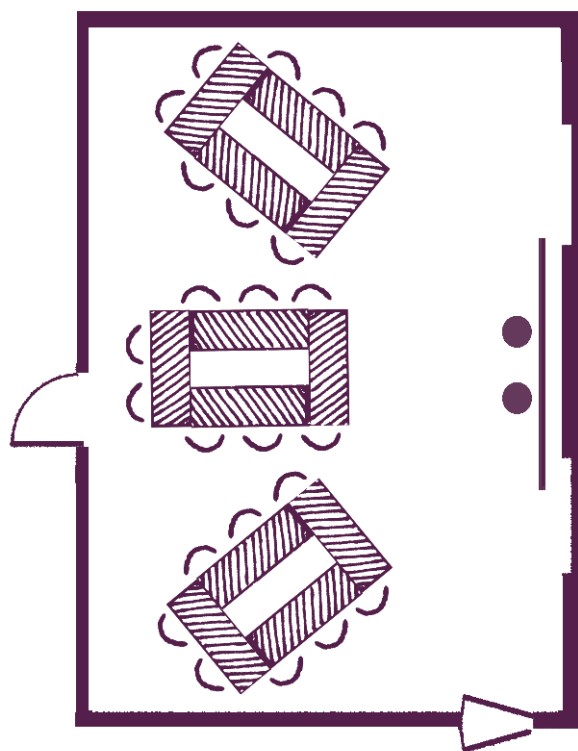
Your meeting rooms

Room layouts adapted to your specific meeting requirements

Ground floor



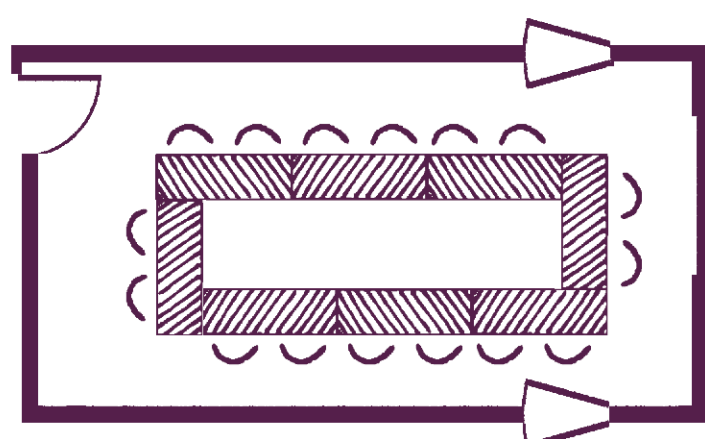
Le Pont Royal
26 participants
en double "U"
(56 m², 9, m x 6,3 m)



Le Pont Royal
24 participants
en îlots
(56 m², 9, m x 6,3 m)



Le Passage Potiers
10 participants
en "U"
(25 m², 6,5 m x 3,9 m)



Le Passage Potiers
16 participants
en "Conférence"
(25 m², 6,5 m x 3,9 m)

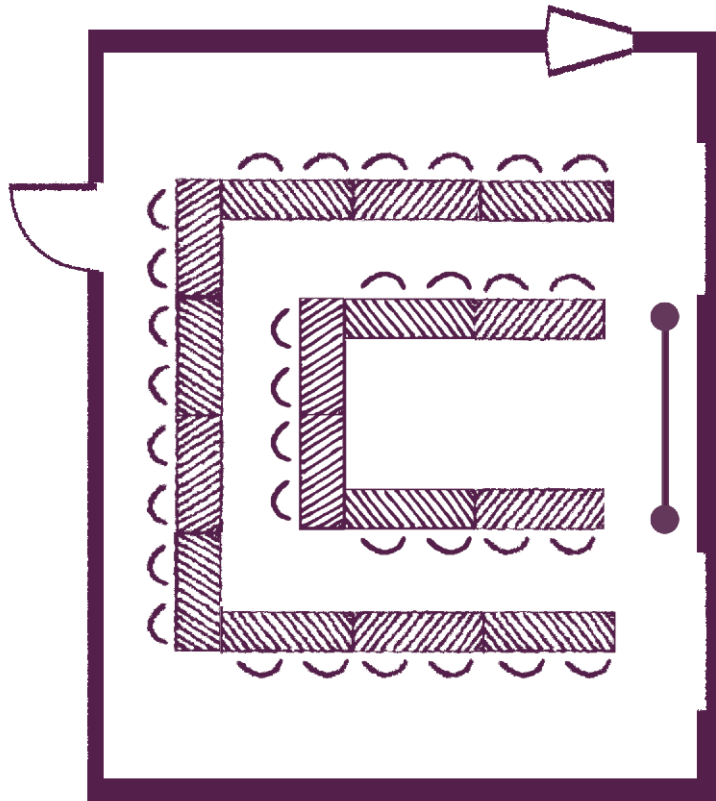


The home of seminars
Châteauform'

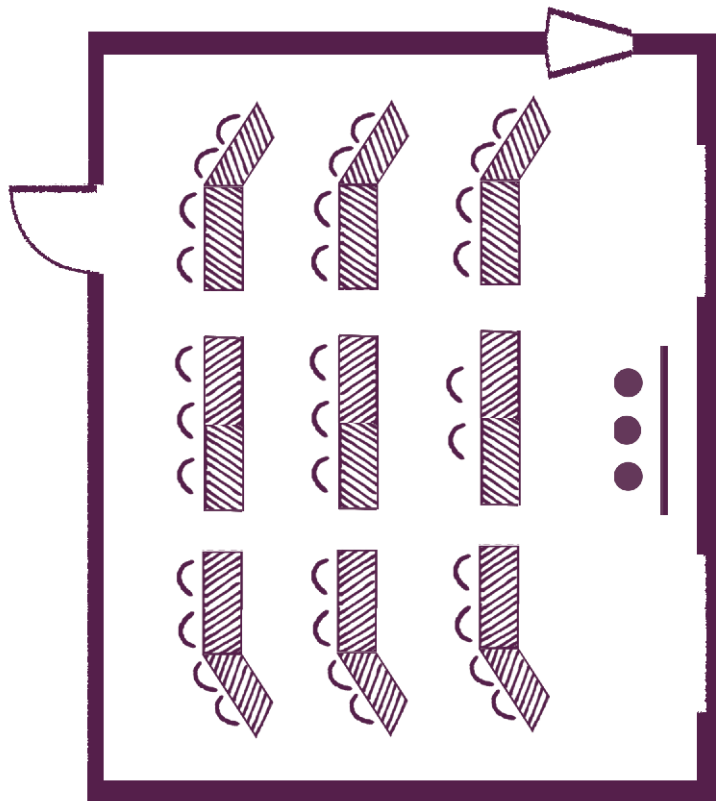
La Princesse de Mello

Your meeting rooms

Room layouts adapted to your specific meeting requirements



La Rue du Bac
32 participants
en double "U"
(51 m², 7,90 m x 6,95 m)



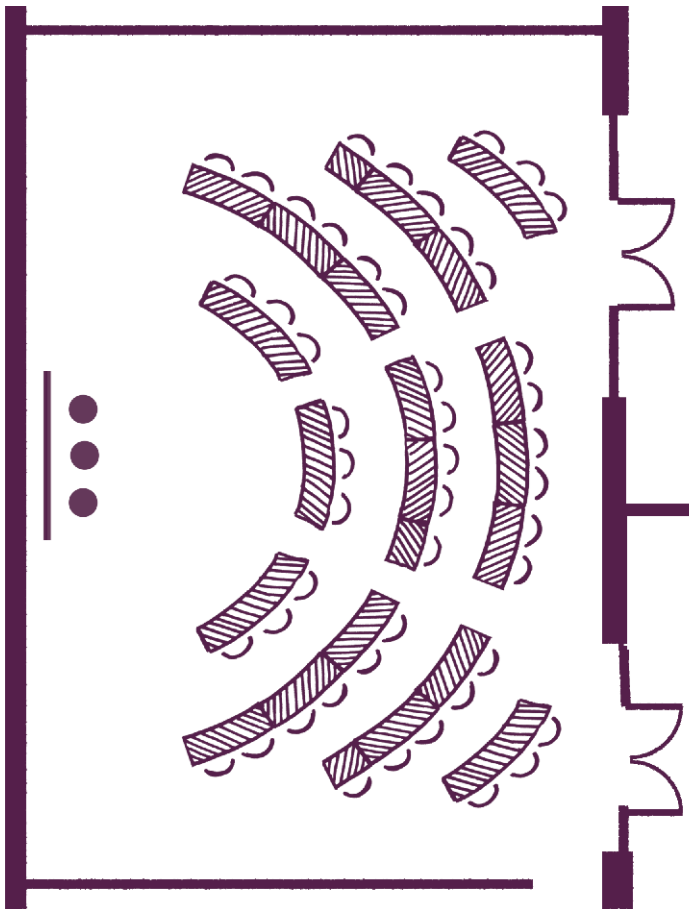
La Rue du Bac
32 participants
en "Amphi"
(51 m², 7,90 m x 6,95 m)



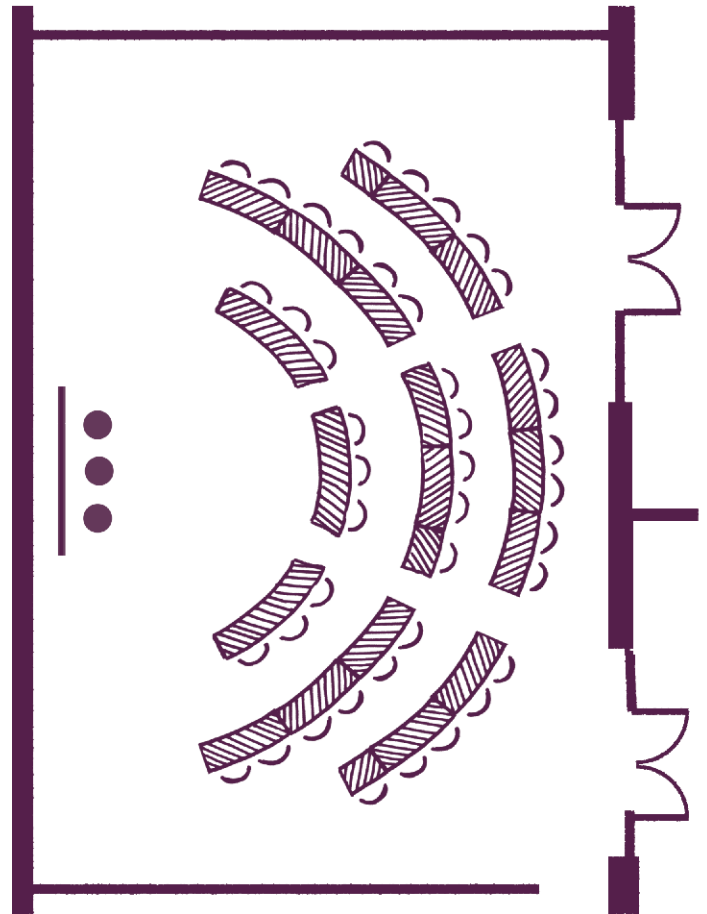
Your meeting rooms

Room layouts adapted to your specific meeting requirements

Ground floor



La Sorbonne
47 participants
en "Amphi"
(102 m², 8,5 m x 12 m)



École des Beaux Arts
40 participants
en "Amphi"
(98 m², 8,5 m x 11,5 m)



The home of seminars
Châteauform'

La Princesse de Mello